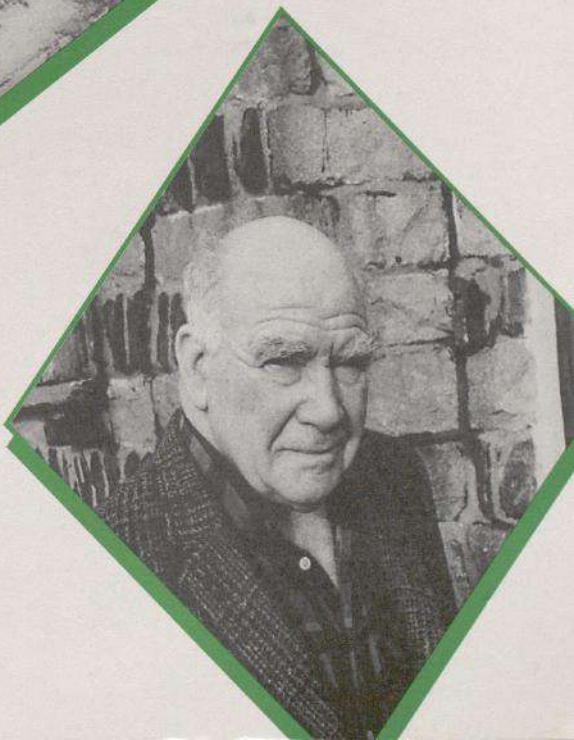


# WCVA Annual report

1 9 9 3 ♦ 1 9 9 4



CYNGOR  
GWEITHREDU  
GWIRFODDOL  
CYMRU



WALES  
COUNCIL FOR  
VOLUNTARY  
ACTION



# Wales Council for Voluntary Action

CYNGOR  
GWEITHREDU  
GWIRFODDOL  
CYMRU



WALES  
COUNCIL FOR  
VOLUNTARY  
ACTION

*Wales Council for Voluntary Action (WCVA) is the national umbrella body for charities, voluntary groups and volunteering in Wales.*

*Through lobbying, consulting its members and working with others, WCVA aims to promote the interests of voluntary organisations. It works to increase their resources and effectiveness and ensure their contribution to Welsh life is recognised and understood.*

*WCVA also offers a range of services including advice, information and training.*

*We have twenty-one staff based at offices in Caerphilly, Welshpool and Llandudno, and 470 member organisations and individuals from across Wales, working in all spheres of voluntary activity.*

## Membership

*WCVA is an independent charity. Join us and receive our monthly magazine of voluntary sector news and views, mailings concerned with meetings, training events and new publications, discounts on some conferences and courses plus priority access to information and advice services.*

**Full membership** costs £20 and is open to national (Wales) voluntary organisations and county voluntary councils. Each year full members elect the Executive Committee which runs the organisation.

**Associate membership** costs £12 and is open to local organisations, branches of national voluntary organisations, statutory agencies and individuals.

These details may change in 1994/95.



## Chair's foreword

*In commending this annual report to all our members and friends, I begin by acknowledging with gratitude the significant contribution made by Sir Donald Walters to the Council's work during his seven years as chairman.*

**Much was achieved during that period.**

Here are three notes from your new chair:

- ◆ First, thanks to all who have helped during the past year with advice, funds, support and encouragement.
- ◆ Second, a reminder that WCVA could not exist without its members to nurture its services and provide the feedback to enrich its contribution to the national life of Wales.
- ◆ Third, many happy returns in a sixtieth birthday year means that the challenges of the changing voluntary scene must be met within the context of the distinctive qualities of Wales. That this has been evident during the past year has, in no small way, been due to the commitment and work of WCVA's staff, and we thank them.

We look forward to working with all those agencies serving the people of Wales, and to good times ahead!

*Marjorie Dykins*

Marjorie Dykins

## Director's report

**Voluntary organisations in Wales have faced a testing time over the last year, planning for and dealing with an unparalleled period of change.**



The changes often arise from new legislation which, in turn, creates new structures, policies, relationships and funding arrangements. Such change, compounded by the overall economic climate of static or shrinking public and private expenditure, has stimulated debate about the future direction and purpose of charity and voluntary activity.

In this climate, organisations are anxious about their future, though many are laying careful plans for what it may bring.

The challenge for WCVA, as the Wales-wide voice of voluntary action, is to make sure that, rather than harm voluntary activity, the changes bring with them as many opportunities as possible.

This means having a clear vision for the future as well as effective representation and an influence on policy. It also means more skills, knowledge and resources for the sector and encouraging individuals to have confidence in their role as trustees.

This annual report reflects WCVA's growing effectiveness and activity in these crucial areas and provides the basis for its next three year programme.

Over the next few years, WCVA will continue to speak out on issues of concern to voluntary organisations, and will also assist trustees and organisations in building links with new health and local authorities, and attracting new sources of funds to increase their own effectiveness and independence.

WCVA will also continue to devolve its activities and increase its own assets so that it, too, can assure its independence and Wales-wide future.

*G Benfield*

Graham Benfield



*The Welsh voluntary sector found itself up against a number of often slow but fundamental shifts in its working environment in 1993/4. The following report details the most significant, and the action WCVA took on them.*

## Central government support

The Welsh Office Voluntary Sector Branch lost some of its staff and gained responsibility for crime initiatives during the year. A WCVA survey found that while some 1990 recommendations for improved relations with the voluntary sector had been taken up - such as improved contact with groups - others due to be in place by mid-1993 had not materialised. In particular less than half of the groups grant-funded by the Welsh Office knew what their grant was by the start of the financial year. There is still no obvious policy on volunteering and the Strategic Development Scheme replaced the Urban Programme and the Rural Initiative as a source of funding - without voluntary sector consultation.

However WCVA recommendations for measures to safeguard voluntary groups funded by local government during the reorganisation were incorporated into Welsh Office guidance.

## Local authority support

For groups funded by local government, the delay in the forthcoming switch to unitary authorities (now April 1996) allowed time to prepare. Through popular meetings and its *Essential Guide to Reorganisation*, WCVA urged local groups, with their county voluntary councils, to organise in the new council areas and get their voice heard in time for the changeover. WCVA also put amendments to the reorganisation Bill before Parliament, calling for voluntary organisations' funding to be protected during the changes.

WCVA successfully launched *Towards Shared Aims* - a joint initiative and publication with the Welsh Office, Association of Welsh Counties and Council of Welsh Districts - aimed at improving working relations between voluntary groups and local government.

WCVA research showed that local authority funding to Welsh groups increased between 1990/1 and 1992/3.

Research also began into health authority/voluntary sector funding and relationships.

## Volunteering

With Welsh Office funding, WCVA helped coordinate the UK Volunteer Centre's Volunteers' Week in Wales. We also published good practice guidelines and ran a series of seminars on subjects such as

volunteering and benefits and managing volunteers. WCVA continued to co-ordinate the Volunteer Organisers' Forum and to represent Welsh volunteering concerns at a UK level.

## Trust funding

Two thirds of charitable trust giving goes to southeast England, a situation which WCVA sought to publicise and redress, increasing contact with trusts and bringing twenty-eight of them to Wales for a day to look at the barriers to funding Welsh groups. WCVA also continued to lobby for a Welsh charitable trust, although a proposal to use the Welsh Church Act Funds for this purpose was unsuccessful.







Marc Phillips, director of Dyfed Association of Voluntary Services speaking at the Eisteddfod.

## The Voluntary Action Pavilion

Balloons, choirs, talks and plenty of visitors - the Voluntary Action Pavilion at the Bulth Wells National Eisteddfod had it all. This 'first-ever' event, organised by WCVA and Wales Council for the Disabled, saw fourteen voluntary groups housed together under the banner Efo'n Gilydd (Working Together), ensuring a prominent platform for voluntary work. Groups which took part and people visiting, all agreed the venture was a success with opportunities to work together, learn about other organisations' work and target a Welsh speaking audience directly. The Pavilion received good press coverage and is due for increased take up at Neath in July 1994.



The popular Newport on Usk Deaf Choir performing in the Voluntary Action Pavilion at the Eisteddfod.

## Europe

European work proved a growth area with WCVA working to make groups more aware of Euro-funding and policy. In November WCVA processed 119 applications for European Structural Funds (ESF) worth £6.5m - compared to a £2.8m bid last year. ESF funding to the Welsh voluntary sector in 1993 was £2.5m, up £1m on 1992. WCVA has been heavily involved in drafting new programmes for the major European schemes. This has resulted in community development projects being funded for the first time ever. We have also responded to important consultations such as the future of social policy in Europe, lobbied on many policy areas and continued to support European networks. This has resulted in a

higher profile for the sector and has highlighted areas of concern raised by it.

## Welsh language

1993 saw the first ever Voluntary Action Pavilion at the National Eisteddfod. The pavilion, organised by WCVA and the Wales Council for the Disabled, housed fourteen groups and substantially raised the sector's profile on the Maes. WCVA lobbying on the Welsh Language Bill also resulted in success - meaning that groups working in Welsh are now legally able to declare their charitable status in Welsh only. WCVA produced more publications and events bilingually than previously and an application was made to the Welsh Language Board for a project to assist voluntary groups develop Welsh language policies.



WCVA Finance Officer Doug Morris helping set up the WCVA Eisteddfod stand.



## National lottery

Just one quarter of a pence in the £1 lottery ticket will end up with Welsh charities WCVA believes, and there are dangers the national lottery could threaten traditional fundraising. WCVA sought to publicise these concerns and brief groups on what to expect. We also lobbied to ensure Welsh representation on decisions about how the money reaches charities, and proposed people to sit on the National Lottery Charities Board.

## Criminal justice

WCVA commissioned and published a briefing paper on recent government changes to the criminal justice system and how they are likely to affect voluntary groups and volunteers working in this field.

## Environment

After two years of work with many people and groups working in the environmental field, WCVA and Friends of the Earth Cymru jointly produced *Growing Greener*, a practical guide to helping voluntary groups in Wales find the greenest working practices around. This was followed up with two training events.



Snipe - one of the wading birds whose future environmental groups are trying to protect by campaigning against a second motorway across the Gwent levels.



The Alzheimer's Disease Society's Whitchurch day centre faced possible closure due to changes in assessment and contract arrangements under community care in March 1994.

## Community care

The quality of community care you receive in Wales depends largely on where you live and what you want. In addition the move to contracts has sometimes meant an emphasis on costs over quality.

This patchy start to the new service was

revealed in

widely

publicised

WCVA

research on

voluntary

sector

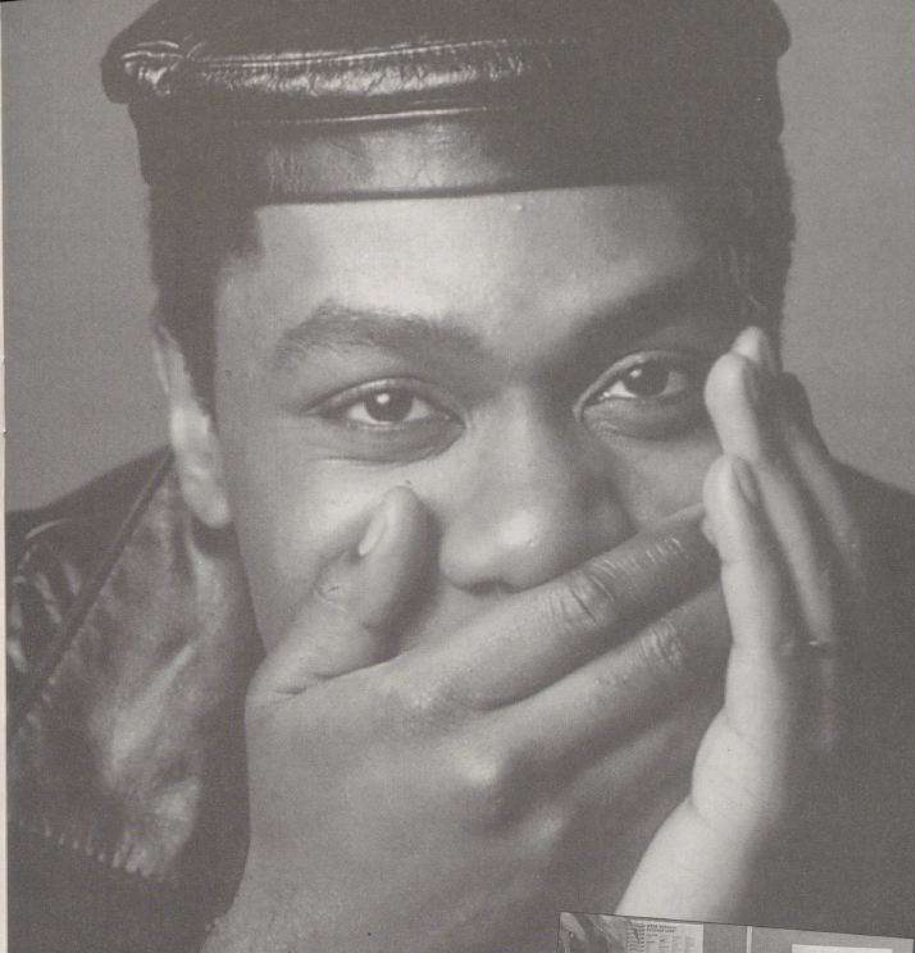
experiences of

the changes.



*Growing Greener* was published by FOE Cymru and WCVA as a guide for Welsh voluntary groups, offering advice on how to green your workplace on a tight budget





Are you a trustee? Do you have a sneaking suspicion that you may be, but are not really sure what is involved? Well don't panic! Help is at hand in the WCVA *Trustee Information Pack*. Launched alongside the Charity Commission's *Crucial guide to trusteeship* video starring Lenny Henry, the pack is aimed at Wales' estimated 250,000 trustees and covers such daunting but 'crucial' topics as fundraising, accounts, management and liability. Things do not often go wrong, the pack points out - but if trustees do not understand their responsibilities - nobody else does!

The Charity Commission Video, *Trusteeship - the Crucial Guide* starring Lenny Henry, was launched in Wales alongside WCVA's *Trustee Information Pack*.

## Services

### Training

Following consultation, WCVA devised a 1993/4 training programme aimed at meeting the needs of the sector. This included day courses at locations across Wales and short residential courses run by experienced trainers, on subjects such as European funding, the Charities Act (with the Charity Commission) and staff development.

Twenty-three individually tailored, in-house training events also ran successfully - over twice as many as anticipated.

After revelations that many more trustees than was thought are not aware of their liabilities and responsibilities, WCVA launched a *Trustee Information Pack* and began work on a training programme, which it is hoped will eventually reach Wales' many thousands of trustees.

Queries on just about every aspect of training were dealt with, and support given on issues such as national vocational qualifications, as well as to the Welsh Training Support Network.



Mike Palmer of WCVA at the Eisteddfod Voluntary Action Pavilion with the 1992/3 Training Programme.





The Amelia Trust farm in the Vale of Glamorgan featured in WCVA's *Network Wales* magazine.

### Advice

WCVA's advice services concentrated mainly on funding, including European funding, and legal matters. On the legal side 169 queries were dealt with on issues such as constitutions and trustee liability. In addition work to update WCVA's own constitution and membership has been ongoing.

On funding more than three hundred enquiries were dealt with, of which around half used WCVA's Funder Finder database service.

Evaluation of WCVA's funding advice service showed that while all organisations were satisfied with the service, there was some frustration with the Funder Finder database as hit and miss, with many requests for more local, specific information. It also found that more than 40% of organisations contacting WCVA were acting on recommendation.

On Europe 550 queries were dealt with, far more than expected. Regular information was distributed to the European Social Fund network, as well as through advice surgeries, individual help and training.



HTV's *Really Helpful Programme* began broadcasting in 1993 and covered a range of community issues and voluntary groups. Above (left to right) Jill Taylor (admin), Sara Jones (presenter), Davina Page (reporter) and David Lloyd (producer).

### Information

WCVA's monthly magazine, *Network Wales*, was reviewed and a decision made to redesign and relaunch it next year. Advertising revenue from the magazine has gone up. Community Enterprise Wales joined the seven county voluntary councils receiving WCVA's bi-monthly, bilingual newsletter supplement. WCVA's up-to-date news service or 'current awareness service' continued, as well as updates to its series of information sheets.

Fifteen publications were produced, as well as advertising and exhibition material. New *Report and Briefing series* were launched and those publications for sale showed healthy sales figures. Media coverage went up by at least 40%, with 32 press releases issued and at least 115 items published or broadcast.

WCVA's library and databases were maintained and 1,200 general enquiries answered on all aspects of voluntary activity.



## Support and representation

During this year, WCVA continued to represent the sector on a host of internal issues at UK and European level. It also actively supported a great many networks and fora working on voluntary sector issues, in a bid to promote a more cohesive, coherent and effective sector in Wales. In particular contact with North Wales groups expanded dramatically and the work of the Welshpool office became focussed purely on Europe, with the rural brief shifting to the Llandudno office. Internally, WCVA set up a working group to review its corporate image.



WCVA North Wales officer Mike Palmer welcomes young visitors to the WCVA stand at the Eisteddfod.

## Volunteering in Wales Fund and the Esmee Fairbairn Charitable Trust

1,137 volunteers working in thirty groups received funding from the Volunteering in Wales Fund (VIWF) which WCVA administers on behalf of the Welsh Office.

The fund increases the opportunity for people in Wales to volunteer. But information from applications also revealed a cash crisis in many areas - particularly CABx, community transport groups, Victim Support and Women's Aid. There were also long-term money problems facing new volunteer bureaux and volunteer training.

WCVA also administers small grants on behalf of the London-based Esmee Fairbairn Charitable Trust. In 1993/4 sixty-two awards were made to voluntary groups, totalling £26,115.



Gail Foley of BBC Wales helped present the Cardiff/WCVA end of a satellite link-up to a London conference organised by the Charities Aid Foundation, which also went to Northern Ireland and Scotland.

In early 1994 the Cardiff Rape and Sexual Abuse Line (CRASAL) sent out urgent letters asking for financial help to prevent the line folding. Rape crisis qualifies for no statutory grants, "we don't fit into any nice category" explained spokeswoman Maggie Phillips. "We are not a trendy cause, the government hasn't taken it on board at all and the big institutions don't want to know." In March the WCVA-administered Volunteering in Wales Fund made an emergency award of £3,576 to CRASAL to help them and their 25 volunteers keep going in the short term. VIWF awarded similar amounts to Victim Support schemes in Gwynedd and North Wales, which despite a small amount from the Home Office, also struggle for funds to keep their vital service going.



## 1993 April

- ♦ Community Care Act comes into force. WCVA warns of possible exploitation of volunteers.
- ♦ WCVA/Charity Commission seminar - Llandrindod Wells.



## August

- ♦ First ever Voluntary Action Pavilion at the National Eisteddfod, run by WCVA and WCD, and housing fourteen charities.
- ♦ Community Care Information Initiative Awards announced.
- ♦ Home Office consult on fundraising regulations.

## May

- ♦ Three WCVA training events on volunteering.
- ♦ Wales Anti-Poverty Network launched.
- ♦ Treasury announces 12% tax on the national lottery.

## June

- ♦ Strategic Development Scheme announced.
- ♦ WCVA/Charity Commission seminar - Carmarthen.
- ♦ Towyn flood disaster.

## July

- ♦ Peter Lilley warns of cuts to invalidity benefit.
- ♦ WCVA holds consultations in North and South Wales on the Reform of the European Structural Funds.
- ♦ WCVA annual training programme launched.
- ♦ Following WCVA lobbying, Welsh Language Bill includes right for groups to quote charitable status in Welsh only.
- ♦ WCVA responds to White Paper on local government reorganisation.

## September

- ♦ WCVA annual conference in Carno - *The future on our terms*.
- ♦ South Wales launch of *Towards Shared Aims*.



Speakers at the launch of *Towards Shared Aims* in Cardiff, September 1993.



Roger Fox of the Drama Association for Wales speaking at WCVA's AGM.

## October

- ♦ Centris *Voluntary Action* report published.
- ♦ WCVA elects Marjorie Dykins as chair succeeding Sir Donald Walters. Jane Hutt becomes vice chair.
- ♦ WCVA publish a briefing on the Criminal Justice Act.





WCVA North Wales officer Mike Palmer is interviewed for Radio Cymru at the 1993 AGM in Carno.

## November

- ◆ 119 ESF bids processed by WCVA for £6.8m.
- ◆ John Redwood announces local government reorganisation is to be delayed until 1996.
- ◆ National Lottery etc. Act becomes law.
- ◆ CAF 'resource crisis' conference satellite linked to WCVA event in Cardiff.
- ◆ WCVA host Euro Conference in Cardiff with the WDA and Mid Glamorgan County Council.
- ◆ WCVA and the Volunteer Organisers' Forum publish *Guidelines for Volunteer Organisers*.
- ◆ WCVA's 3rd *Directory of Voluntary Organisations* published.

## December

- ◆ Conservation NVQs launched in Wales.
- ◆ WCVA publishes *The Children Act 1989 - A Guide for Voluntary Organisations*.
- ◆ Welsh Language Act passed.

## 1994 January

- ◆ WCVA lobby intensively on new European programmes.
- ◆ North Wales launch of *Towards Shared Aims*.
- ◆ Media launch of joint WCVA/Friends of the Earth Cymru publication *Growing Greener*.
- ◆ WCVA publishes its *Essential guide to local government reorganisation for voluntary groups*.

## February

- ◆ Media launch of WCVA community care report.
- ◆ WCVA *Trustee Information Pack* launched with chief charity commissioner Richard Fries.

## March

- ◆ WCVA *Building Bridges* event in Cardiff with twenty-eight UK charitable trusts.
- ◆ Government launches its 'Make a Difference' Volunteering Initiative.
- ◆ Civil Rights (Disabled Persons) Bill in Parliament.
- ◆ WCVA publish *Finding the Funding* - a survey of local government funding to voluntary groups and *Have they Listened?* - a survey of central government implementation of Efficiency Scrutiny recommendations.

If you stop for bed and breakfast on the road to St Asaph you may well find yourself the guest of The Bed and Breakfast Training Project run by Pengwern College of Further Education. The project, thanks to its European Social Fund grant, facilitated by WCVA, is unique in the way it meets the vocational training needs of people with severe and complex learning difficulties. There is no indication inside or outside the chalet that it is run by Pengwern and its Welsh Tourist Board recognition plus the high praise in the visitors' book are clear evidence of its success. Some six students a year live there, developing their catering, leisure provision and hospitality skills for which they gain nationally recognised qualifications.



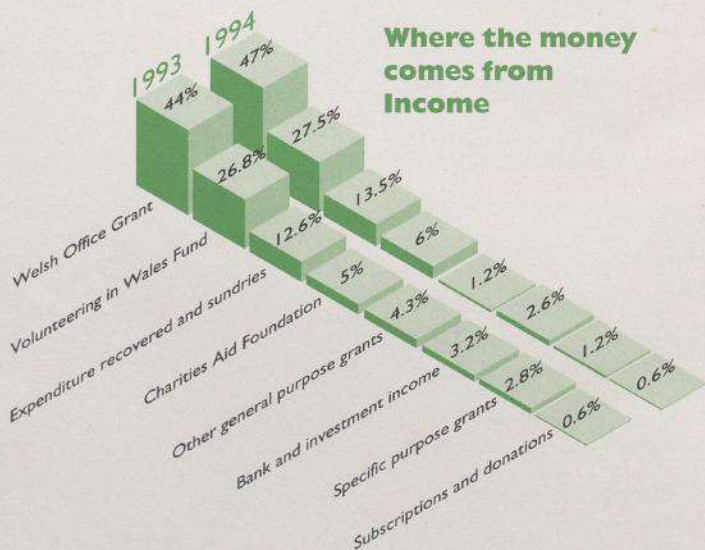
# Summarised accounts for the year ended 31 March 1994

## Balance sheet as at 31 March 1994

|  | 1994           | 1993           |
|--|----------------|----------------|
| <b>Fixed assets</b>                          |                |                |
| Tangible assets                              |                |                |
| Freehold property                            | 340,000        | 340,000        |
| Motor vehicles                               | 13,469         | 7,000          |
|  | <u>353,469</u> | <u>347,000</u> |
| <b>Current assets</b>                        |                |                |
| Investments                                  | 120,652        | 100,832        |
| Debtors and prepayments                      | 22,058         | 11,708         |
| Cash at bank                                 | 152,006        | 158,109        |
| Cash in hand                                 | 124            | 148            |
|  | <u>294,840</u> | <u>270,797</u> |
| <b>Creditors</b>                             |                |                |
| Amounts falling due within one year          | 165,937        | 155,350        |
| Net current assets                           | <u>128,903</u> | <u>115,447</u> |
| Total assets less current liabilities        | <u>482,372</u> | <u>462,447</u> |
| <b>Creditors</b>                             |                |                |
| Amounts falling due after more than one year | 3,982          | —              |
| Provision for liabilities                    | 65,000         | 50,000         |
|  | <u>413,390</u> | <u>412,447</u> |
| <b>Reserves</b>                              |                |                |
| Accumulated funds                            | 190,888        | 189,945        |
| Revaluation reserve                          | 222,502        | 222,502        |
|  | <u>413,390</u> | <u>412,447</u> |

## Income and expenditure account for the year ended 31 March 1994

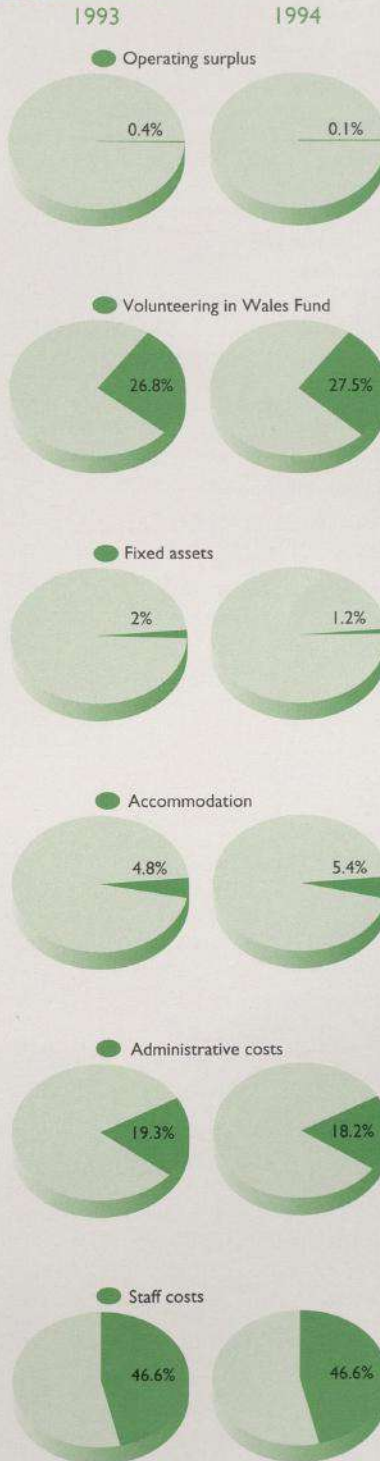
|   | 1994           | 1993           |
|---|----------------|----------------|
| <b>Income</b>                           |                |                |
| Grants for general purposes             |                |                |
| Welsh Office                            | 378,532        | 354,970        |
| Charities Aid Foundation                | 48,344         | 42,966         |
| European Social Fund - Employment       | 9,345          | —              |
| Allen Lane Foundation                   | 1,000          | —              |
| National Westminster Bank               | —              | 11,500         |
| British Petroleum                       | —              | 7,500          |
| Gulbenkian Foundation (Lisbon)          | —              | 6,000          |
| Royal Mail                              | —              | 5,000          |
| British Telecom                         | —              | 3,437          |
| Marks and Spencer                       | —              | 1,100          |
| South Glamorgan County Council          | —              | 500            |
|   | <u>437,221</u> | <u>432,973</u> |
| Grants for specific purposes            |                |                |
| Welsh Office - Language grant           | 4,750          | 9,300          |
| Volunteers Week                         | 4,786          | —              |
| Children Act                            | —              | 12,196         |
| Garden Festival                         | —              | 1,000          |
|   | <u>9,536</u>   | <u>22,496</u>  |
| <b>Other income</b>                     |                |                |
| Expenditure recovered and sundry income | 108,252        | 100,976        |
| Bank and investment income (gross)      | 21,331         | 25,264         |
| Subscriptions and donations             | 5,432          | 5,266          |
|   | <u>135,015</u> | <u>131,506</u> |
| Volunteering in Wales Fund              | 221,000        | 215,000        |
| Total operating income                  | <u>802,772</u> | <u>801,975</u> |



## Income and expenditure account for the year ended 31 March 1994

|   | 1994           | 1993           |
|---|----------------|----------------|
| <b>Operating income,</b><br>brought forward   | 802,772        | 801,975        |
| <b>Expenditure</b>                            |                |                |
| Administrative expenses                       |                |                |
| Salaries and staff costs                      | 343,839        | 340,016        |
| Staff training                                | 4,957          | 9,602          |
| Travelling and subsistence                    | 24,765         | 24,438         |
| Equipment leasing and<br>maintenance          | 14,375         | 10,979         |
| Insurances                                    | 998            | 966            |
| Printing, stationery and<br>office supplies   | 19,333         | 18,703         |
| Postage and telephone                         | 29,779         | 24,576         |
| Publications and advertising                  | 19,372         | 19,714         |
| Conferences, meetings and<br>training courses | 34,900         | 43,151         |
| Miscellaneous expenses                        | 1,384          | 2,551          |
| Auditors remuneration                         | 3,500          | 3,000          |
| Computer costs                                | 4,848          | 9,766          |
| Consultants fees                              | 15,594         | 8,609          |
| Motor car, depreciation<br>and loss           | 6,500          | 3,000          |
| Translation costs                             | 4,318          | 9,998          |
| Bank charges                                  | 729            | -              |
|   | 529,191        | 529,069        |
| <b>Accommodation costs</b>                    |                |                |
| Rent and rates                                | 13,611         | 11,572         |
| Insurances                                    | 997            | 966            |
| Lighting and heating                          | 10,134         | 5,881          |
| Cleaning and maintenance                      | 3,008          | 4,938          |
| Provision for building<br>maintenance         | 15,000         | 15,000         |
|   | 42,750         | 38,357         |
| <b>Expenditure on fixed assets</b>            |                |                |
| Office furniture and equipment                | 8,888          | 16,458         |
| Volunteering in Wales Fund                    | 221,000        | 215,000        |
| <b>Total expenditure</b>                      | <b>801,829</b> | <b>798,884</b> |
| <b>Operating surplus</b>                      | <b>943</b>     | <b>3,091</b>   |
| <b>Surplus on sales of assets</b>             | <b>-</b>       | <b>9,075</b>   |
|   | <b>943</b>     | <b>12,166</b>  |

## Where the money goes Expenditure



## Accounting policies

- ◆ The accounts have been prepared under the historical cost convention as modified by the revaluation of freehold property.
- ◆ Bank deposit interest is included as income on an accruing basis. Donations are included when they are received. Grants are included in the year to which they relate.
- ◆ No account has been taken of stocks of publications or stationery.
- ◆ Depreciation is charged on the motor car at 30% on cost.

A complete set of the reports and accounts can be obtained from Mr D Morris, company secretary, WCVA, at Llys Ifor, Crescent Road, Caerphilly, CF8 1XL, tel 0222 869224.

To the members of Wales Council for Voluntary Action

In the opinion of the auditors, Messrs. Zeidman & Davis, the summarised accounts given in this document are consistent with the full annual accounts.

The auditors' report on the full accounts was unqualified.

*Zeidman & Davis*

Zeidman & Davis  
Certified Accountants  
Registered Auditors  
Lawrence House,  
Caerphilly,  
Mid Glamorgan.



## Executive committee

### President

The Earl of Lisburne

### Hon Treasurer

Mr W P Kitson

### Hon Solicitor

Messrs Phillips & Buck

### Chairman [to Oct 1993]

Sir Donald Walters

### Chair

Mrs Marjorie Dykins

### Vice Chairman [to Oct 1993]

Professor George Thomason, CBE

### Vice Chair

Jane Hutt

Dr N Ahmad

Mrs Pat Bowen

Professor Maurice Broady

Lt Col David Cox, LVO MBE

Mrs Ceinwen Davies

Mr John Ashton Edwards, OBE

Mr Hywel V. Evans

Ms S Meryl Evans

Mr Simon Hebditch

Mr Phil Jarrold

The Rev Frank Jenkins

Mr John R Jones

Ms Jane Lewes

Mr John Payne

Mr D Marc Phillips

Mr Drew Reith

Ms Jenny Render

Mr Robert Taylor

Mrs Margaret Thorne, OBE, DL

Mr P K Verma, JP

## Assessors to the Executive

Mr Alan Thornton, Welsh Office

Mr David G Evans, Welsh Office

## Auditors

Messrs Zeidman & Davis

## Bankers

National Westminster Bank Plc



The Earl of Lisburne  
WCVA President



Jane Hutt  
WCVA Vice Chair



Douglas Morris  
WCVA Company  
Secretary/Finance  
Officer



John Ashton Edwards  
WCVA executive  
member



Stan Salter  
Fund Administrator



Jan Bish  
Director's Personal  
Assistant



Marc Phillips  
WCVA executive  
member

## The Council's staff March 1993/94

**Director** Graham Benfield

**Director's Personal Assistant** Jan Bish

**Company Secretary/ Finance Officer** Douglas Morris

**Finance Assistant** Vida Davies

**Information & Research Manager** Lynda Garfield

**Information Assistant** Aled Llwyd Evans

**Press & Publications Officer** Penny Taylor

**Training & Conference Officer** Ruth Marks

**Training & Conference Administrator** Sue Hutchings

**Local Development Officer** Jane Jones

**National Development Officer** Peter Bryant

**Funding Advice Officer** Margaret Bond

**Fund Administrator** Stan Salter

**Rural & European Officer** Dewi Llwyd Evans

**European Social Fund Officer** Helen McLaughlin

**Office Administrator** Lyn Lawton

**North Wales Officer** Michael Palmer

**Fundraising Officer** Lindsey Williams

**Office Supervisor** Diane Roberts

**Clerical Assistant & Health & Safety Officer** Wendy Bidgway

**Office Junior** Kathryn Thomas

**Janitor** Ron Pask

**Office Cleaner** Ann Greenway

WCVA would like to thank the following organisations for their support:

- ♦ Welsh Office
- ♦ Cardiff City Council
- ♦ South Glamorgan County Council
- ♦ Esmee Fairbairn Charitable Trust
- ♦ Allen Lane Foundation
- ♦ National Westminster Bank
- ♦ Tudor Trust
- ♦ Calouste Gulbenkian Foundation
- ♦ Carnegie UK Trust
- ♦ The Lankelly Foundation

## Aelodau bywyd mygedol Honorary life members

Reverend Ivor V Cassam  
Mr Charles Harrison, JP  
Mr H Noel Jerman, CBE  
Mr J O Jones  
The Earl of Lisburne  
Mr John C Price  
Professor G F Thomason, CBE

## Aelodau llawn Individual members

Professor Maurice Broady  
Ms Rhian Davies  
Mrs Majorie Dykins  
Mr Hywel V Evans  
Mr Hywel Griffiths  
Ms Jane Hutt  
Mr W P Kitson  
Ms Jane Lewes  
Mrs G M Lysaght  
Mrs Elinor Patchell  
Mr Julian Phillips  
Mr H Hugh Thomas  
Mr R M Thomas  
Mrs Margaret Thorne  
Sir Donald Walters  
Mr Martin Warren  
Mr Alistair Wood

## Aelodau cysylltiol Affiliate members

Age Concern Wales  
Alcohol Concern Wales  
Alzheimers Disease Society  
Army Cadet Force (Wales)  
Barnardo's  
British Red Cross Society (Wales)  
Campaign for the Protection of Rural Wales  
Carers National Association  
Centre for Applied Social Studies, U C Swansea  
Charities Evaluation Services  
Childline Cymru/Wales  
Children in Wales  
The Children's Society  
Clwyd Voluntary Services Council  
Coleg Harlech  
Community Design Service  
Community Development Foundation Wales  
Community Enterprise Wales  
Community Service Volunteers (Wales)  
Crossroads Caring for Carers (Wales)  
Cymdeithas Epilepsi Cymru  
Cymdeithas Tai Hafan  
Cyngor Gwlad Gwynedd  
Cynon Valley Community Projects Association

Dyfed Association of Voluntary Services  
Equal Opportunities Commission  
Gwent Association of Voluntary Organisations  
Gwent Racial Equality Council  
Gwerin Y Coed  
Huntington's Disease Association  
Keep Wales Tidy Campaign  
Kidney Research Unit for Wales  
Manic Depression Fellowship Wales  
Mencap in Wales  
Merched Y Wawr  
Mid Glamorgan Association of Voluntary Organisations  
Mudiad Ysgolion Meithrin  
National Association of Citizens Advice Bureaux  
National Association of Young People in Care  
National Childminding Association  
National Children's Home in Wales  
National Council of Voluntary Organisations  
National Council of YMCA's of Wales  
National Federation of Women's Institutes  
National Museum of Wales  
National Schizophrenia Fellowship  
Newport Resource Centre  
Order of St John  
Oxfam in Wales  
Physically Handicapped and Able Bodied Council for Wales  
Play Wales  
PONT  
Powys Rural Council  
Salvation Army  
Save the Children Fund  
Schizophrenia Association of Great Britain  
Shelter Cymru  
South Glamorgan Intervol  
Standing Conference of Voluntary Organisations for People with a Mental Handicap in Wales  
Tenants Participation Advisory Service (Wales)  
Urdd Gobaith Cymru  
Wales Assembly of Women  
Wales Association for the Performing Arts  
Wales Association of County Voluntary Councils  
Wales Co-operative Development and Training Centre  
Wales Council for the Blind  
Wales Council for the Deaf  
Wales Council for the Disabled  
Wales MIND  
Wales Pensioners  
Wales Preschool Playgroups Association  
Wales Young Farmers Club  
Welsh Association of Youth Clubs  
Welsh Centre for International Affairs  
Welsh Consumer Council  
Welsh Federation of Boys & Girls Groups in Wales  
Welsh Initiative for Specialised Employment  
Welsh Joint Education Committee  
Welsh Scout Council  
Welsh Voluntary AIDS Forum  
Welsh Women's Aid  
West Glamorgan Council for Voluntary Service  
West Glamorgan Racial Equality Council  
Women's Royal Voluntary Service, Welsh Headquarters  
The Workers' Educational Association



## Aelodau cysylltiol Associate membership

- Julian Brinkworth  
 The Hon I Davies  
 Gerry Evans  
 John Lightfoot  
 Kay Quinn  
 Jill Taylor  
 Alain Thomas  
 Abbey Road Centre - Bangor  
 ABCD (Improving Access for Black Children with Disabilities)  
 Aberaeron Social Services Department  
 Aberconwy Case Management Team  
 Aberconwy Homestart  
 Aberconwy MIND  
 Abergavenny MIND  
 Action Aid - Go Ten for Africa - Milford Haven  
 Action Aid for the Disabled - Newport  
 Action on Smoking and Health  
 Adamsdown Housing Association  
 Age Concern, Gwent  
 Age Concern, Mid Glamorgan  
 Age Concern, South Glamorgan  
 Age Concern, West Glamorgan  
 Agoriad Cyf  
 Albert Road Methodist Church - Penarth  
 Alyn & Deeside Community Agency  
 Anheddau Gwynedd Cyf  
 Antur Dwyryd  
 Arts for Disabled People in Wales  
 Association of Voluntary Organisations in Wrexham  
 Association of Welsh Wildlife Trusts  
 Bangor Community Action  
 BBC Children in Need  
 BBC Wales - Broadcasting Support Services  
 BBC Wales - Educational Broadcasting Services  
 Betws Amenities Society  
 Boys' Brigade in Wales  
 Brecon & District Disabled Club  
 Brecon Volunteer Bureau  
 Bridgend College Library  
 Bridges Community Centre - Monmouth  
 British Agencies for Adoption and Fostering  
 British Diabetic Association - Ebbw Vale  
 British & Foreign Bible Society  
 British Red Cross Society - Cardiff  
 British Red Cross Society - Crickhowell  
 British Red Cross Society - Pontypridd  
 British Trust for Conversation Volunteers  
 Brynmawr & District Mencap Society  
 Caldicot Resource Centre  
 Canolfan Felin Fach Centre  
 Canton & Riverside Community Education  
 Cardiff AIDS Helpline  
 Cardiff Bond Bank  
 Cardiff City Farm Trust  
 Cardiff Flatshop  
 Cardiff Gypsy Sites Group  
 Cardiff MIND Accommodation Project  
 Cardiff Move-on Ltd  
 Cardiff Rape & Sexual Abuse Line  
 Cardiff Single Women's Housing Group  
 Cardiff Student Community Action  
 Cardiff Universities Social Services  
 Cardiff & Vale Enterprise Centre  
 Cardiff Women's Aid  
 Care & Repair (Cymru)  
 Carmarthen Women's Aid  
 Carningli Trust  
 Cartrefi Cymru - Cwmbran  
 Cartrefi Cymru - Pontyclun  
 Cathays Youth & Community Project  
 Catholic Children & Family Care Society (Wales)  
 Cefn Community Centre - Merthyr Tydfil  
 Central Cardiff Citizens Advice Bureau  
 Central Council for Education and Training in Social Work  
 Ceredigion Crossroads Care  
 Charities Aid Foundation  
 Charity Projects  
 Charter Housing  
 Chartered Institute of Housing in Wales  
 Chepstow Crossroads Care  
 Chepstow & District Mencap Society  
 Children's Society, Canolfan Yr Esgobaeth - Bangor  
 Children's Society, Diocesan Resource Centre - Wrexham  
 Children's Society, Family Centre - Swansea  
 Christian Aid - Cardiff  
 Church of Wales, Board of Mission  
 Citizen Advocacy in South Glamorgan  
 City Centre Youth Project - Cardiff  
 Clwyd Mental Health Alliance  
 Clwyd Social Services Department - Wrexham  
 Clwyd Special Riding Trust  
 Coleg Elidyr  
 Colwyn Citizen Advocacy  
 Colwyn Voluntary Support Services  
 Communities in Action  
 Community Council of Hereford & Worcester  
 Community Design for Gwent  
 Community Development Foundation (UK)  
 Community Development Foundation, Ogwr Valleys Project  
 Community Music Wales  
 Community Radio Association  
 Community Support Services - Caernarfon  
 Community Support Team - Cardiff  
 The Compassionate Friends  
 Cruse Bereavement Care - Builth Wells  
 Creu Cof - Ceredigion  
 Cyd-Ddeall Cymru  
 Cymdeithas Caer Las - Swansea  
 Cymdeithas Cynhorau Bro a Thref Cymru  
 Cynogor Cymru ar Alcohol  
 Cynon Action for the Single Homeless  
 Cynon Valley Care & Repair  
 Cynon Valley Crime Prevention Bureau  
 Cynon Valley Employee Volunteering Initiative  
 Cystic Fibrosis Trust  
 Daybreak  
 Deeside Community Centre  
 Delyn Borough Council  
 Dial Llantrisant & District

Dial UK  
 Dinas Powys Community Resource Centre  
 Dinefwr Enterprise Co Ltd  
 Diocese of Llandaff Council for Social Responsibility  
 Disabled Drivers Association  
 Disablement Welfare Rights - Bangor  
 Dolen Cymru  
 Drama Association of Wales  
 Drive - Mid Glamorgan  
 Drug Aid - Cardiff  
 Dyfed Alcohol Advisory Service  
 Dyfed Wildlife Trust  
 Ely Hospital, Voluntary Services Department  
 Emergency Intervention Service - Cardiff  
 European Strategy Unit, Royal Welsh Showground  
 Exploring Parenthood  
 Eye Level Photographic  
 Family Planning Association  
 Foreign & Commonwealth Office  
 Forest of Cardiff  
 Gabalfa Community Workshop  
 Galon Uchaf Residents Board - Merthyr Tydfil  
 Gingerbread in Wales - Bangor  
 Gingerbread in Wales - Swansea  
 Glamorgan Federation of Women's Institutes  
 Glyntaff Tenants & Residents Association - Pontypridd  
 Gofal Housing Trust  
 G R Associates  
 The Guiding Hand Association  
 Gwent College of Higher Education  
 Gwent Hospitals Contributory Fund  
 Gwynedd Hospice at Home  
 Gwynedd Library Services  
 Haverfordwest Mencap Society  
 Hay on Wye Community Support Bureau  
 Health Promotion Wales  
 Help the Aged Wales  
 Holme Tower Marie Curie Centre - Penarth  
 Home & Community Care Services - Conwy  
 Homestart UK  
 Housing for Wales/Tai Cymru  
 HTV Cymru/Wales  
 Islamic Society for Gwent  
 Islwyn Council for the Disabled  
 Kids Clubs Network  
 Kirkham & Elphick Consultants  
 L'Arche  
 Leonard Cheshire Foundation - Llangollen  
 Leonard Cheshire Foundation - Shropshire  
 Llamau Housing Society  
 Llandrindod Wells SPA Foundation  
 Llanelli Centre Project  
 Llanelli Crossroads Care  
 Llanelli & Dinefwr Community Health Council  
 Llanelli Youth & Childrens Association  
 Llanfyllin Playscheme  
 Llanishen Good Neighbours  
 Llanrumney Community Project (NCH)  
 Lliw Valley Women's Aid  
 Lloyd-Davies Partners  
 Mencap in Wales, Community Resource Project - Mid Glamorgan  
 Menter Hiraethog - Pentrefoelas  
 Merthyr Care & Repair  
 Merthyr & Cynon Groundwork  
 Merthyr MIND  
 Mid Glamorgan Citizen Advocacy - Pontypridd  
 Mid Glamorgan County Council - Bridgend  
 Mid Glamorgan Health Authority  
 Mid Glamorgan Participation Project  
 Mid-Rhondda Tenants Association  
 MIND in Gwynedd  
 Montgomery Alcohol Advice Group  
 Montgomeryshire Citizen Advocacy  
 Montgomeryshire Women's Aid  
 Motor Neurone Disease Association  
 NACRO NCT - Barry  
 NACRO NCT - Merthyr Tydfil  
 NACRO NCT - Newport  
 NACRO Training Services - Bath  
 National Association of Citizens Advice Bureaux - North Wales  
 National Association League of Hospital Friends  
 National Childminding Association - Bridgend  
 National Childminding Association - Swansea  
 National Childminding Association - Wrexham  
 National Institute of Adult Continuing Education Cymru  
 National Society for the Prevention of Cruelty of Children  
 National Trust - Llandudno  
 National Youth Agency - England  
 Neath MIND  
 Newemploy Wales  
 Newport Action for the Single Homeless  
 Newport Borough Council, Housing & Property Maintenance Division  
 Newport Borough Libraries  
 Newport MIND  
 North Ely Community Resource Centre  
 North Wales Association for Spina Bifida & Hydrocephalus  
 North Wales Christian Family Project, Stepping Stones  
 North Wales Resource Centre for Disabled People  
 North Wales Victim Support Scheme  
 North & West Wales Practice Centre  
 Offa Community Council - Wrexham  
 Ogwr Care & Repair  
 Ogwr Community Health Council  
 Ogwr Drug & Alcohol Self Help  
 Ogwr Groundwork Trust  
 Ogwr MIND  
 Ogwr Single Homeless Action Committee  
 Old Barn Family Centre - Abergavenny  
 Old Parish Enterprise - Maesteg  
 Open University in Wales  
 Opportunity Housing Trust  
 Palmerston Community Education Centre  
 Pembrokeshire MIND  
 Pembrokeshire Opportunities Initiative Project (Mencap in Wales)  
 Pengwern Further Education College  
 Penygraig Community Project  
 People & Work Unit - Abergavenny  
 Planning Aid Wales  
 Pontypool MIND  
 Pontypridd Citizens Advice Bureau



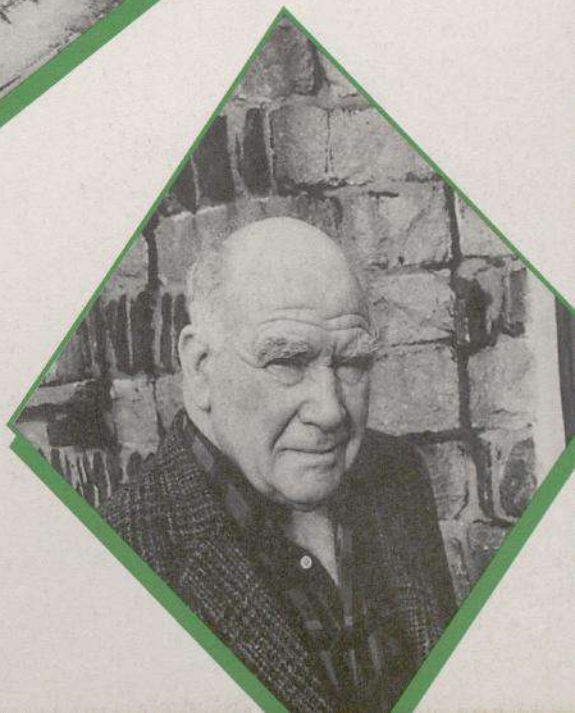
# Aelodau CGGC ♦ WCVVA members

- Pontypridd Housing Association  
Pontypridd Volunteer Bureau  
Port Talbot & Afan Single Homeless Society  
Powys AIDS Line  
Powys County Council  
Powys Victim Support  
Presbyterian Church of Wales Youth Service  
PRESS (Planned Residential Support Services)  
Prince of Wales Committee - Mold  
Prince of Wales Committee - Newtown  
Prince's Youth Business Trust  
Princess Margaret School, Barnardos - Taunton  
Racism Awareness Consultancy and Education  
Radnor Care & Repair  
Radnor Support Project  
Ramblers' Association  
Relate North Wales  
Relate South Wales  
Re-Solv (The Society for the Prevention of Solvent & Volatile Substance Abuse)  
Rhayader & District Community Support  
Rhondda Community Arts  
Rhondda Mencap Society  
Rhydney Valley Community Health Council  
Rhydney Valley Home-Start  
Rhydney Valley Social Services  
Rhydney Valley Women's Aid  
Royal Society for the Protection of Birds  
Save the Children Fund - Cynon Valley Project  
Sense Cymru  
Sequal  
South Glamorgan Alzheimers Disease Society  
South Glamorgan County Council  
South Glamorgan County Libraries  
South Glamorgan Crossroads Care  
South Glamorgan Play Services Association  
South Glamorgan Playbus Association  
South Glamorgan Probation Services  
South Glamorgan Race Equality Council  
South Glamorgan Social Services  
South Pembrokeshire Partnership for Action with Rural Communities  
South Riverside Community Development Centre - Cardiff  
South Wales Association for Spina Bifida and Hydrocephalus  
South Wales Convalescent & Rest Home  
South Wales Federated Housing Association Ltd  
South Wales Miners' Library  
Spastics Society - Wales Regional Office  
Special Needs Housing Advisory Service  
Specialist Money Advice Bureau  
St Briavels Centre for Child Development  
St David's Foundation - Newport  
Staying Put Agency - Newport  
Staying Put Agency - South Pembrokeshire  
Streets Project - Ammanford  
Swansea Citizens Advice Bureau  
Swansea City Council, Housing Department  
Swansea Drugs Project  
Swansea & Lliw Valley Crime Prevention Panel  
Swansea MIND  
Swansea Student Community Action  
Swansea Womens Resource & Training Centre  
Swansea Young Single Homeless Project  
Switch - Bridgend  
Taff Ely Drug Support Group  
Teen Challenge UK  
Telecottages Wales  
Tenants Participation Advisory Service (Wales)  
Tenovus  
Tenovus Cancer Information Centre  
Tirion Trust Ltd  
Torfaen Citizen Advocacy  
Torfaen Community Transport & Dial-A-Ride Scheme  
Torfaen Women's Aid  
Transport & General Workers Union Retired Members Association  
Trust for Sick Children in Wales  
Ty Glyn Housing Society, Cardiff  
Ty Hafan Children's Society, Hospice in Wales  
Tyddyn Mon Ltd  
United Nations Association, International Youth Service  
United Welsh Housing Association  
University of Wales, College of Cardiff Library  
Urban Regeneration Project  
Vale of Clwyd MIND - Denbigh  
Vale of Clwyd MIND - Rhyll  
Valley Arts Marketing  
Valley & Vale Community Arts  
Valleys' Initiative for Adult Education  
Voluntary Arts Network  
Voluntary Community Service - Cardiff  
Volunteer Centre UK  
Wales & West Housing Association  
Wales Youth Agency  
The Wallich Clifford Community - Cardiff  
Welsh Agricultural College, Joint Library  
Welsh Centre for Learning Disabilities  
Welsh Development Agency  
Welsh Office, Library  
Welsh Tenants Federation  
Welsh Women's Aid - Aberystwyth  
West Glamorgan Community Education  
West Glamorgan Forum  
West Wales Arts  
WRAP (Wrexham Advocacy Partnerships)  
Wrexham Maelor Community Agency  
Wrexham Maelor Groundwork Trust  
Wrexham Maelor Home-Start  
Ynys Mon & Anglesey Community Health Council  
Youthlink Wales  
Ystradgynlais Citizens Advice Bureau



# Adroddiad blynyddol CGGC

| 9 9 3 ♦ | 9 9 4



CYNGOR  
GWEITHREDU  
GWIRFODDOL  
CYMRU



WALES  
COUNCIL FOR  
VOLUNTARY  
ACTION





*Cyngor Gweithredu Gwirfoddol Cymru (CGGC) yw'r corff 'ymbarél' cenedlaethol sy'n cynrychioli elusennau, grwpiau gwirfoddol a gwirfoddolwyr yng Nghymru.*

*Trwy lobio, ymgynghori â'i aelodau a chydweithio ag eraill mae CGGC yn anelu at hyrwyddo buddiannau mudiadau gwirfoddol. Mae'n gweithio i gynyddu'u hadnoddau, eu gwneud yn fwy effeithiol a sicrhau fod eu cyfraniad i fywyd Cymru'n cael ei gydnabod a'i ddeall.*

*Mae CGGC hefyd yn cynnig amrywiaeth o wasanaethau gan gynnwys cyngor, gwybodaeth a hyfforddiant.*

*Mae gennym ddau ddeg un o staff wedi'u lleoli mewn swyddfeydd yng Nghaerffili, y Trallwng a Llandudno, gyda 470 o fudiadau ac unigolion yn perthyn i'r Cyngor ledled Cymru, ac yn gweithio ym mhob maes o weithredu gwirfoddol.*

## **Aelodaeth**

*Mae CGGC yn elusen annibynnol. Ymunwch â ni ac fe fyddwch yn derbyn ein cylchgrawn misol sy'n cynnwys newyddion a barn o'r sector wirfoddol, cylchlythrau ynghylch cyfarfodydd, cyrsiau hyfforddi a chyhoeddiadau newydd, gostyngiadau ar rai cynadleddau a chysiau yn ogystal â blaenoriaeth ar gyfer derbyn rhai gwasanaethau gwybodaeth a chyngor.*

Mae **aelodaeth lawn**, sy'n costio £20, yn agored i fudiadau gwirfoddol cenedlaethol (Cymru) a chynghorau gwirfoddol sirol. Bob blwyddyn mae aelodau llawn yn ethol y Pwyllgor Gweithredol sy'n rhedeg y mudiad.

Mae **aelodaeth gysylltliol**, sy'n costio £12, yn agored i fudiadau lleol, canghennau o fudiadau gwirfoddol cenedlaethol, asiantaethau statudol ac unigolion.

Gall y manylion hyn newid ym 1994/95.



## Rhagair gan gadeirydd CGGC Marjorie Dykins

*Wrth gyflwyno'r adroddiad blynyddol hwn i'n holl aelodau a chyfeillion, fe hoffwn ddechrau trwy ddiolch yn fawr i Syr Donald Walters am ei gyfraniad sylweddol i waith y Cyngor yn ystod ei*

*saith mlynedd fel cadeirydd. Cyflawnwyd llawer yn ystod y cyfnod hwnnw.*

Dyma dri nodyn gan eich cadeirydd newydd.

- ◆ I ddechrau, diolch i bawb sydd wedi'n cynorthwyo dros y flwyddyn ddiwethaf gan gynnig anogaeth, cyngor, arian a chefnogaeth.
- ◆ Yn ail, hoffwn eich atgoffa na fyddai CGGC yn gallu gweithredu heb ei aelodau i ddatblygu ei wasanaethau a chynnig eu hymateb er mwyn cyfoethogi'i gyfraniad i fywyd cenedlaethol Cymru.
- ◆ Yn drydydd, penblwydd hapus yn chwe deg mlynedd oed. Rhaid cwrdd â sialens newydd y sector wirfoddol o fewn cyd-destun nodweddion arbennig Cymru. I ymroddiad a gwaith caled staff CGGC mae'r diolch fod hyn wedi digwydd dros y flwyddyn ddiwethaf.

Edrychwn ymlaen i weithio gyda'r holl asiantaethau hynny sy'n gwasanaethu pobl Cymru, ac i'r amseroedd da sydd o'n blaenau!

*Marjorie Dykins*

Marjorie Dykins

## Adroddiad y Cyfarwyddwr

*Mae'r flwyddyn ddiwethaf wedi bod yn un anodd i fudiadau gwirfoddol yng Nghymru, wrth iddyn gyllunio ar gyfer cyfnod o newidiadau nas gwelwyd eu math o'r blaen ac ymdopi â'r newidiadau hynny.*



Mae'r newidiadau'n aml yn deillio o ddeddfwriaeth newydd sydd, yn ei thro, yn creu strwythurau, polisiau, perthnasau a threfniadau cyllido newydd. Mae newid o'r fath, ynghyd â'r hinsawdd economaidd gyffredinol ble mae gwariant cyhoeddus a phreifat wedi'i rewi neu'i gwtogi, wedi ysgogi trafodaeth ynghylch cyfeiriad a phwrpas elusennau a mudiadau gwirfoddol yn y dyfodol.

Yn yr hinsawdd hwn, mae mudiadau'n bryderus ynghylch eu dyfodol, er bod llawer ohonynt yn cynllunio'n ofalus ar ei gyfer.

Y sialens i CGGC, fel llais cenedlaethol Cymru dros fudiadau gwirfoddol, yw sicrhau fod y newidiadau'n dod â chymaint o gyfleoedd â phosibl gyda hwy, yn hytrach na niweidio gweithgaredd gwirfoddol.

Golyga hyn fod rhaid cael cynlluniau clir ar gyfer y dyfodol yn ogystal â chynrychiolaeth effeithiol a'r gallu i ddylanwadu ar bolisiau. Mae hefyd yn golygu datblygu mwy o sgiliau, gwybodaeth ac adnoddau ar gyfer y sector ac annog unigolion i fod yn hyderus yn eu rôl fel ymddiriedolwyr.

Mae'r adroddiad blynyddol hwn yn adlewyrchu effeithiolrwydd a gweithgaredd cynyddol CGGC yn y meysydd hanfodol hyn ac yn cynnig sail i'w raglen ar gyfer y dair mlynedd nesaf.

Dros yr ychydig flynyddoedd nesaf bydd CGGC yn parhau i godi ei lais ar faterion sydd o bwys i fudiadau gwirfoddol, yn ogystal â chynorthwyo ymddiriedolwyr a mudiadau i sefydlu cysylltiadau gyda'r awdurdodau iechyd a lleol newydd, a denu ffynonellau cyllid newydd i sicrhau'u bod yn fwy effeithiol ac annibynnol.

Bydd CGGC hefyd yn parhau i ddatblygu'i weithgareddau a chynyddu'i asedau ei hun fel y gall ef, hefyd, sicrhau ei annibyniaeth a'i ddyfodol ledled Cymru.

*G Benfield*

Graham Benfield



*Bu raid i sector wirfoddol Cymru wynebu nifer o newidiadau araf ond sylfaenol yn ei amgylchedd gwaith ym 1993/94. Mae'r adroddiad sy'n dilyn yn manylu ynghylch y rhai mwyaf arwyddocaol, yn ogystal â'r camau a gymerodd CGGC i ymateb iddynt.*



Cyfarwyddwr CGGC Graham Benfield yn lansio Anelu at Amcanion Cyffredin yng Nghaerdydd.

## Cefnogaeth y llywodraeth ganolog

Collodd Cangen Sector Wirfoddol y Swyddfa Gymreig rai o'i staff a derbyn y cyfrifoldeb am fentrau gwrth-droseddwy'r ystod y flwyddyn. Dangosodd arolwg gan CGGC fod rhai o argymhellion 1990 ar gyfer gwella'r berthynas gyda'r sector wirfoddol - fel gwella'r cysylltiad cyffredinol gyda'r grwpiau - wedi'u mabwysiadu, ond nad oedd eraill a ddylai fod wedi'u mabwysiadu erbyn canol 1993 wedi ymddangos. Yn arbennig, llai na hanner y grwpiau a dderbyniai grant gan y Swyddfa Gymreig oedd yn gwybod beth oedd swm y grant hwnnw erbyn dechrau'r flwyddyn ariannol. Nid oes yna bolisi pendant ar wirfoddoli o hyd, a mabwysiadwyd y Cynllun Datblygu Strategol fel ffynhonnell gyllid yn lle'r Rhaglen Drefol a Menter Cefn Gwlad - heb ymgynghori gyda'r sector wirfoddol.

Er hynny ymgorfforwyd, yng Nghannllawiau'r Swyddfa Gymreig, argymhellion CGGC ar gyfer mesurau i ddiogelu grwpiau gwirfoddol sy'n cael eu cyllido gan lywodraeth leol yn ystod y cyfnod ad-drefnu.

## Cefnogaeth llywodraeth leol

Roedd gohirio creu awdurdodau unedol (Ebrill 1996 erbyn hyn) yn rhoi amser i grwpiau sy'n derbyn cyllid gan lywodraeth leol baratoi. Anogodd CGGC y grwpiau lleol, trwy gyfrwng cyfarfodydd poblogaidd a'i *Essential Guide to Reorganisation*, i drefnu'u hunain yn ardaloedd y cynghorau newydd a sicrhau fod eu llais yn cael ei glywed mewn da bryd ar gyfer yr ad-drefnu. Rhoddodd CGGC hefyd welliannau i'r Mesur ad-drefnu ger bron y Senedd, gan alw am warchod cyllid mudiadau gwirfoddol yn ystod y newidiadau.

Lansiodd CGGC *Anelu at Amcanion Cyffredin* - menter a chyhoeddai ar y cyd gyda'r Swyddfa Gymreig, Cymdeithas Siroedd Cymru a Chyngor Dosbarthau Cymreig - sy'n ceisio gwella'r berthynas waith rhwng grwpiau gwirfoddol a

llywodraeth leol. Dangosodd gwaith ymchwil CGGC hefyd fod awdurdodau lleol wedi darparu mwy o gyllid i grwpiau Cymreig ym 1992/3 nag ym 1990/91.

Cychwynnwyd ar waith ymchwil i gyllid yr awdurdod iechyd i'r sector wirfoddol a'r berthynas rhyngddynt.

## Gwirfoddoli

Gyda chymorth cyllid gan y Swyddfa Gymreig, cynorthwyodd CGGC i gyd-gysylltu Wythnos Wirfoddolwyr Canolfan Gwirfoddolwyr Prydain yng Nghymru. Buom hefyd yn gyfrifol am gyhoeddi canllawiau arferion da a threfnu cyfres o seminarau ar bynciau fel gwirfoddoli, budd-daliadau a rheoli gwirfoddolwyr. Parhaodd CGGC i gyd-gysylltu Fforwm Trefnwyr Gwirfoddoli a chynrychioli mudiadau gwirfoddol Cymru ar lefel Brydeinig.

## Cyllid Ymddiriedolaethau

Mae dwy ran o dair o'r arian elusennol i ymddiriedolaethau'n mynd i dde-ddwyrain Lloegr. Ceisiodd CGGC roi cyhoeddusrwydd i'r sefyllfa a datrys y problem trwy gynyddu'r cysylltiadau gydag ymddiriedolaethau a dod â ddau ddeg wyth ohonynt i Gymru am y dydd i edrych ar y rhwystrau sy'n bodoli i gyllido grwpiau Cymreig. Parhaodd CGGC hefyd i lobio am ymddiriedolaeth elusennol yng Nghymru, er fod cynnig i ddefnyddio Cyllid Deddf Eglwysi Cymru at y diben hwn wedi bod yn aflwyddiannus.





Marc Phillips, cyfarwyddwr Cymdeithas Gwasanaethau Gwirfoddol Dyfed yn siarad yn yr Eisteddfod.

## Y Pafiliwn Gweithredu Gwirfoddol

Balwnau, corau, sgysiaiu a digon o ymwelwyr - roedd gan y Pafiliwn Gweithredu Gwirfoddol bopeth. Bu'r pafiliwn hwn, y cyntaf o'i fath i gael ei drefnu gan y CGGC a Chyngor Cymru i'r Anabl yn gartref dros dro i bedwar ar ddeg o wahanol grwpiau

gwirfoddol o dan y faner Efo'n Gilydd ac yn blatfform amlwg i weithgarwch gwirfoddol.

Roedd y grwpiau a gymerodd ran a'r ymwelwyr i gyd yn cytuno bod y fenter yn

llwyddiant ac yn gyfle i fudiadau gydweithio, dysgu am eu gilydd a thargedu cynulleidfa Gymraeg ei hiaith.

Cafodd y Pafiliwn sylw amlwg yn y wasg ac mae disgwyl iddo dynnu mwy fyth o sylw yng Nghastell-nedd ym mis Gorffennaf eleni.



Côr Byddariaid Casnewydd yn perfformio ym Mhafiliwn Gweithredu Gwirfoddol yr Eisteddfod.

## Yr Iaith Gymraeg

Ym 1993 gwelwyd y Pafiliwn Gweithredu Gwirfoddol cyntaf erioed yn yr Eisteddfod Genedlaethol.

Trefnwyd y pafiliwn, oedd yn cynnwys pedwar grŵp ar ddeg, gan CGGC a Chyngor Cymru i'r Anabl, a chododd broffil y sector ar y Maes yn sylweddol. Bu lobio CGGC ar y Mesur Iaith hefyd yn llwyddiannus - sy'n golygu fod grwpiau yn gweithio yn y Gymraeg yn gallu cyhoeddi'u statws elusennol yn y Gymraeg yn unig erbyn hyn.

Cynhyrchodd CGGC fwy o gyhoeddiadau a threfnu mwy o ddigwyddiadau dwyieithog nag yn y gorffennol a gwnaethpwyd cais i'r Bwrdd Iaith am brosiect i gynorthwyo grwpiau Cymreig i ddatblygu polisïau iaith.



Doug Morris, Swyddog Gyllid CGGC wrthi'n paratol stondin CGGC yn yr Eisteddfod.

## Ewrop

Cynyddodd y gwaith Ewropeaidd wrth i CGGC weithio i wneud grwpiau'n fwy ymwybodol o gyllid a pholisïau Ewrop. Ym mis Tachwedd proseswyd 119 o geisiadau am Gyllid Strwythurol Ewrop (ESF) gwerth £6.5m gan CGGC - o'i gymharu â cheisiadau gwerth £2.8m y llynedd. Rhoddwyd £2.5m o gyllid ESF i'r sector wirfoddol yng Nghymru ym 1993, sef £1m yn fwy na 1992. Bu CGGC yn ymwneud llawer â'r gwaith o ddrafftio rhaglenni newydd ar gyfer cynlluniau Ewropeaidd mawr. O ganlyniad i hyn, derbyniodd prosiectau datblygu cymunedol gyllid am y tro cyntaf erioed. Rydym hefyd wedi ymateb i feysydd pwysig fel dyfodol polisi cymdeithasol yn Ewrop, lobiw ar sawl maes polisi a pharhau i gefnogi rhwydweithiau

Ewropeaidd. Mae hyn wedi codi profil y sector wirfoddol a thynnu sylw at feysydd y mae'r sector wedi mynegi pryder yn eu cylch.



## Loteri cenedlaethol

Mae CGGC yn credu y bydd chwarter ceiniog o'r tocynt loteri £1 yn mynd i elusennau Cymreig, ac mae perygl y bydd y loteri cenedlaethol yn profi'n fgythiad i ddulliau traddodiadol o godi arian. Ceisiodd CGGC roi cyhoeddusrwydd i'r pryderon hyn a rhoi gwybod i grwpiau am yr hyn ddylent ei ddisgwyl. Rydym hefyd wedi lobio i sicrhau fod gan Gymru gynrychiolaeth yn y penderfyniadau ynghylch sut bydd yr arian yn cyrraedd elusennau, a chynnig pobl i eistedd ar Fwrdd Elusennau y Loteri Cenedlaethol.



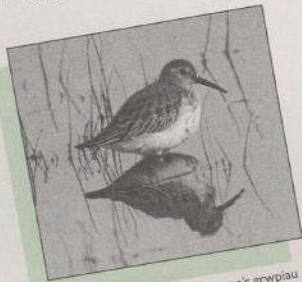
Trefnwyd Cynhadledd i'r Wasg fis Chwefror 1994 i lansio adroddiad CGGC ar brofiadau grwpiau gwirfoddol dros ddeg mis cynaf o ofal yn y gymuned. (Chwith i'r dde) Judith Jones (Croesffordd Cymru), Graham Benfield (Cyfarwyddwr CGGC), Peter Bryant (Swyddog Datblygu Cenedlaethol CGGC ac awdur yr adroddiad Gofal yn y Gymuned), Margaret Knight (Cyd-drefnydd Cymdeithas Genedlaethol y Cynhalwyr yng Nghymru).

## Gofal yn y gymuned

Mae safon y gofal cymunedol rydych yn ei dderbyn yng Nghymru yn dibynnu ar ble rydych yn byw a beth rydych yn dymuno'i gael. Yn ogystal â hyn, mae'r system contractau newydd yn golygu fod costau'n cael blaenoriaeth dros ansawdd. Datgelwyd y cychwyn sigledig hwn i'r gwasanaeth gan ymchwil CGGC ar brofiadau'r sector wirfoddol o'r newidiadau, a derbyniodd yr ymchwil honno lawer iawn o gyhoeddusrwydd.

## Yr amgylchedd

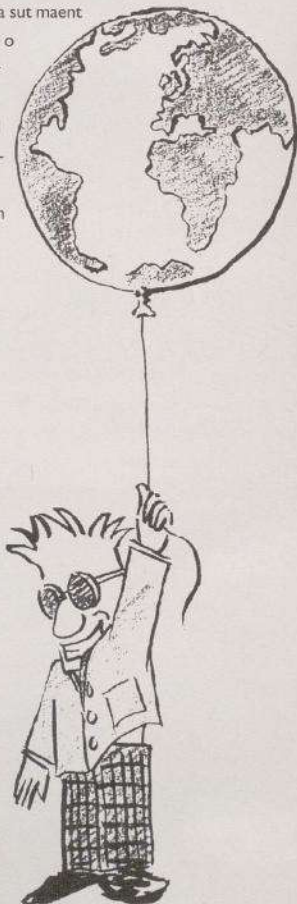
Wedi dwy flynedd o weithio gyda llawer o bobl a grwpiau ym maes yr amgylchedd, cynhyrchodd CGGC a Chyfeillion y Ddaear Cymru *Tyfiant Gwyrdd*, canllaw ymarferol i helpu grwpiau gwirfoddol yng Nghymru ddog o hyd i'r arferion gwaith mwyaf 'gwyrdd'. Dilynwyd hyn gan ddau ddiwrnod o hyfforddiant.



Llwyd y Tywod, un o'r adar y mae'r grwpiau amgylcheddol yn ceisio gwarchod drwy ymgyrchu yn erbyn yr ail drafoddd lfeleau Gwent ardraws.

## Cyfiawnder troseddol

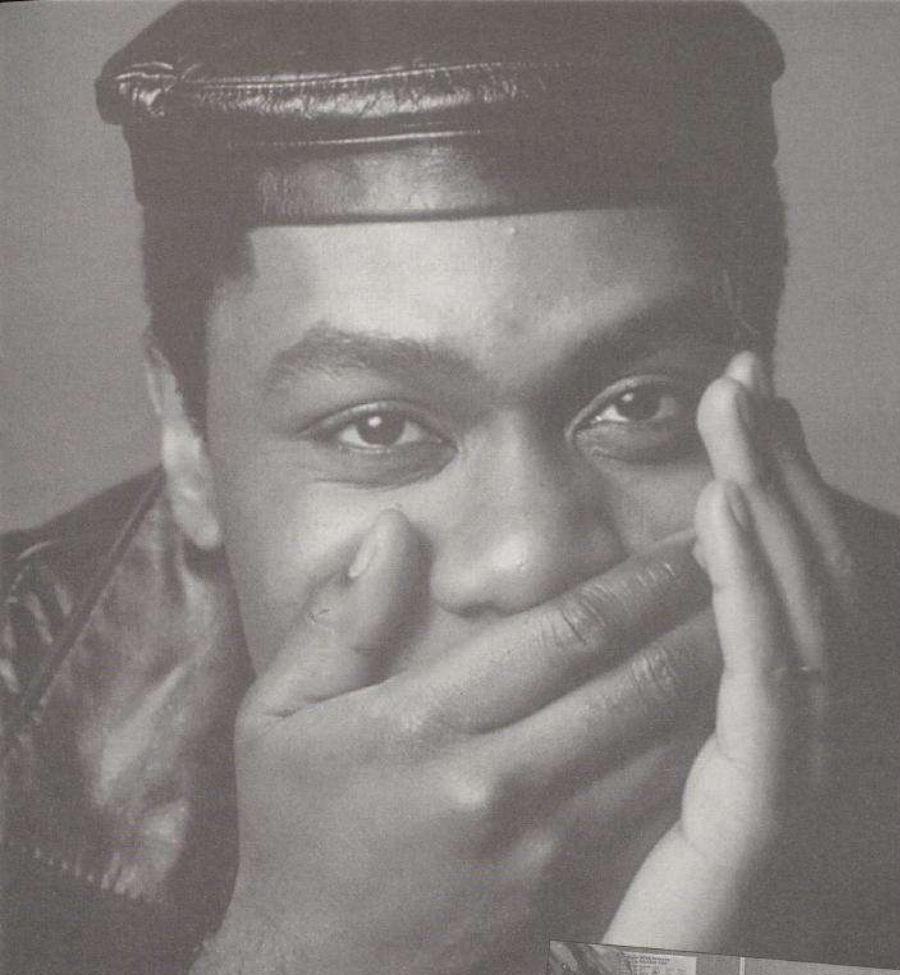
Comisiynodd CGGC bapur crynhoi ar newidiadau diweddar y llywodraeth i'r system cyfiawnder troseddol a sut maent yn debygol o effeithio ar grwpiau gwirfoddol a gwirfoddolwyr sy'n gweithio yn y maes.



Cyhoeddwyd *Tyfiant Gwyrdd* gan Cydd Cymru a CGGC fel canllaw i grwpiau gwirfoddol Cymreig gyda chynngor ar sut i 'wyrddio'ch man gwaith ar gyllid bach.







Lansiwyd fideo'r Comisiwn Elusennau *The crucial guide to trusteeship* yr un pryd â Phecyn Gwybodaeth CGGC i Ymddiriedolwyr. Seren y fideo yw Lenny Henry.

## Gwasanaethau Hyfforddiant

Wedi ymgynghori, lluniodd CGGC raglen hyfforddiant ar gyfer 1993/94 sy'n anelu at gwrdd ag anghenion y sector. Roedd yn cynnwys cyrsiau un-dydd mewn gwahanol leoliadau ledled Cymru a chyrsiau preswyl byr wedi'u trefnu gan hyfforddwyr profiadol ar faterion fel cyllid o Ewrop, y Ddeddf Elusennau (gyda'r Comisiwn Elusennau) a datblygu staff.

Roedd y dau ddeg tri o gyrsiau hyfforddiant-mewn-swydd - dwywaith cymaint â'r disgwyl - a drefniwyd yn benodol i ateb gofynion penodol hefyd yn llwyddiannus.

Wedi darganfod fod llawer llai o ymddiriedolwyr nag a gredid yn ymwybodol o'u hatebolrwydd a'u cyfrifoldebau, lansiodd CGGC *Becyn gwybodaeth i ymddiriedolwyr* a chychwyn gweithio ar raglen hyfforddiant. Gobeithir y bydd, yn y pendraw, yn cyrraedd y miloedd o ymddiriedolwyr yng Nghymru.

Ymdriniwyd â chwestiynau ar bob agwedd o faes hyfforddiant, a rhoddwyd cymorth ar faterion fel cymwysterau galwedigaethol cenedlaethol. Rhoddwyd cymorth hefyd i Rwydwaith Cymorth Hyfforddiant Cymru.



Mike Palmer o CGGC ym Mhafliw'n Gweithredu Gwirfoddol yr Eisteddfod gyda Rhaglen Hyfforddiant 1992/3.

Ydych chi'n  
ymddiriedolwr? Ydych  
chi'n amau'ch bod ond ni  
wyddoch i sicrwydd beth  
mae'n ei olygu? Wel  
peidiwch â chynhyrfu!  
Mae help wrth law ym  
Mhecyn Gwybodaeth  
CGGC i Ymddiriedolwyr.  
Mae'r pecyn hwn a  
lansiwyd yr un pryd â  
fideo'r Comisiynwyr  
Elusennau A Crucial  
guide to trusteeship gyda  
Lenny Henry, wedi'i  
anelu at y 250,000 o  
ymddiriedolwyr y tybir  
sydd yng Nghymru ac  
mae'n trafod pynciau  
mor ddryrs ond mor  
hanfodol â chyfrifon, codi  
arian, rheoli ac  
atebolrwydd. Fel yr  
awgrymir, nid oes  
problemau'n debyg o  
godi'n aml ond os na w'yr  
ymddiriedolwyr eu  
cyfrifoldebau pa ddisgwyl  
i neb arall wybod!





Mylfyrwyr crochenwaith yn Fferm Ymddiriedolaeth Arnelia, a ymddangoswyd yn Rhwydwaith Cymru CGGC.

## Cyngor

Mae gwasanaethau cyngor CGGC yn canolbwyntio fwyaf ar gyllid, gan gynnwys cyllid o Ewrop, a materion cyfreithiol. Ar yr ochr gyfreithiol, ymdrinwyd â 169 o ymholiadau ar faterion fel cyfansoddiadau ac atebolrwydd ymddiriedwyr. Yn ogystal, mae gwaith i ddiweddarau cyfansoddiad ac aelodaeth CGGC ei hun yn mynd rhagddo.

Deliwyd â mwy na thri chant o ymholiadau ym maes cyllid, a defnyddiodd oddeutu hanner y rheiny wasanaeth Bas Data 'Funder Finder' CGGC.

Wrth gloriannu gwasanaeth cyngor CGGC ar gyllid, gwelwyd fod y mudiadau i gyd yn fodlon ar y gwasanaeth, ond fod peth rhwystredigaeth gyda'r bas data 'Funder Finder'. Roedd llawer o alw am wybodaeth mwy lleol a phenodol. Darganfuwyd hefyd fod dros 40% o'r mudiadau oedd yn cysylltu â CGGC yn gwneud hynny ar argymhelliad eraill.

Ymdrinwyd â 550 o ymholiadau ar Ewrop - llawer mwy na'r disgwyl. Dosbarthwyd gwybodaeth yn rheolaidd i rwydwaith Cronfa Gymdeithasol Ewrop, yn ogystal â thrwy swyddfeydd cynghori, cymorth unigol a hyfforddiant.



Darlledwyd y rhaglen Really Helpful Programme gan HTV am y tro cyntaf ym 1993 ac y mae'n trin ag amrywiaeth o bynciau cymunedol a grwpiau gwirfoddol. Uchod (chwith i'r dde), Jill Taylor (gweinyddydd), Sara Jones (cyflwynydd), Davina Page (gohebydd), David Lloyd (cynhyrchydd).

## Gwybodaeth

Adolygwyd cylchgrawn misol CGGC, Rhwydwaith Cymru, a phenderfynwyd ei ailddylunio a'i ail-lansio. Cynyddodd y referniw hysbysebu o'r cylchgrawn. Ymunodd Menter Gymunedol Cymru â'r saith cyngor gwirfoddol sirol sy'n derbyn cylchgrawn deu-fisol, dwyieithog CGGC. Parhaodd gwasanaeth newyddion neu 'wasanaeth gwybodaeth gyfredol' CGGC, a diweddarwyd y gyfres o dafenni gwybodaeth.

Cynhyrchwyd pymtheg o gyhoeddiadau, yn ogystal â deunydd cyhoeddusurwydd a deunydd ar gyfer arddangosfeydd. Lanswyd cyfresi *Adroddiad a Chrynhai* newydd, ac roedd ffigurau gwerthiant y cyhoeddiadau hynny a oedd ar werth yn dda iawn. Cafwyd o leiaf 40% yn fwy o sylw gan y cyfryngau, gyda 32 o ddatganiadau i'r wasg yn cael eu rhyddhau ac o leiaf 115 o eitemau'n cael eu cyhoeddi neu'u darlledu.

Llwyddwyd i gynnal llyfrgelloedd a basau data CGGC ac atebwyd 1,200 o ymholiadau cyffredinol ar bob agwedd o weithgaredd gwirfoddol.



## Cymorth a chynrychiolaeth

Parhaodd CGGC i gynrychioli'r sector ar lu o faterion mewnol ar lefel Prydeinig ac Ewropeaidd yn ystod y flwyddyn. Cynorthwywyd nifer o rwydweithiau a fforwmau sy'n ymwneud â'r sector wirfoddol, er mwyn ceisio hybu sector gyson, gydlyn ac effeithiol yng Nghymru. Yn benodol, cafwyd cynnydd dramatig yn y cysylltiadau gyda grwpiau yng Ngogledd Cymru a dechreuodd swyddfa'r Trallwng ganolbwyntio'n llwyr ar Ewrop, gyda'r gwaith ar ardaloedd gwledig yn symud i swyddfa Llundudno. Yn fewnol, sefydlodd CGGC weithgor i adolygu'i ddelwedd gorfforaethol.



Swyddog Gogledd Cymru CGGC Mike Palmer yn croesawu ymwelwyr ifanc i stondin CGGC yn yr Eisteddfod.

Droeon clywyd cyfweiliadau gan swyddogion CGGC ar Be' Neso? rhaglen gylchgrawn a gyflwynir gan Elin Rhys (dde).

## Cronfa Wirfoddoli yng Nghymru ac Ymddiriedolaeth Elusennol Esmee Fairbairn

Mae 1137 o wirfoddolwyr mewn tri deg o grwpiau'n derbyn cyllid gan y Gronfa Wirfoddoli yng Nghymru (VIWF), sy'n cael ei gweinyddu gan CGGC ar ran y Swyddfa Gymreig.

Mae'r gronfa'n rhoi mwy o gyfle i bobl Cymru wirfoddoli. Ond datgelodd gwybodaeth o'r ceisiadau fod argyfwng ariannol yn bodoli mewn llawer ardal - yn arbennig y Canolfannau Cyngori, grwpiau cludiant cymunedol, Cymorth Dioddefwyr a Chymorth Menywod. Roedd canolfannau gwirfoddolwyr newydd a hyfforddiant i wirfoddolwyr hefyd yn wynebu problemau ariannol yn y tymor hir.

Mae CGGC hefyd yn gweinyddu grantiau bychan ar ran Ymddiriedolaeth Elusennol Esmee Fairbairn, sydd wedi'i lleoli yn Llundain. Ym 1993/94 gwnaethpwyd chwe deg dau o roddion i grwpiau gwirfoddol, sef cyfanswm o £26,115.



Yn gynnar yn y flwyddyn 1994, anfonodd Llinell Drais ac Ymosodiadau Rhywiol Caerdydd lythron brys allan yn gofyn am gymorth ariannol er mwyn arbed y gwasanaeth. Nid yw'r llinell yn gymwys ar gyfer unrhyw grantiau statudol, "d'yn ni ddim yn fficio i mewn i unrhyw gategori hwylus" esboniodd eu llafarydd Maggie Phillips. "D'yn ni ddim yn achos ffasiynol, does gan y Llywodraeth ddim diddordeb o gwbl a dyw'r sefydliadau mawr ddim eisiau gwylod". Ym Mawrth rhoddodd Cronfa Wirfoddoli Cymru o dan weinyddiaeth CGGC daliad brys o £3,576 i arbed y llinell a'i 25 o wirfoddolwyr yn y tymor byr. Rhoddodd y gronfa hon daliadau tebyg i gynlluniau Cymorth i Dioddefwyr Trais yng Ngwynedd a Gogledd Cymru sydd er gwaethaf peth cymorth o'r Swyddfa Gartref yn cael cryn drafertth i gadw dau ben llinyn ynghyd.



## 1993 Ebrill

- ◆ Deddf Gofal yn y Gymuned yn dod i rym. CGGC yn rhybuddio ynghylch y posibilrwydd o gam-ddefnyddio gwirfoddolwyr.
- ◆ Seminar CGGC/Comisiwn Elusennau - Llandrindod.

## Mai

- ◆ Tri chwrs hyfforddi ar wirfoddoli gan CGGC.
- ◆ Lansio Rhwydwaith gwrth-dlodi Cymru
- ◆ Y Trysorlys yn cyhoeddi treth o 12% ar y loteri cenedlaethol.

## Mehefin

- ◆ Cyhoeddi'r Cynllun Datblygu Strategol.
- ◆ Seminar CGGC/Comisiwn Elusennau - Caerfyrddin.
- ◆ Trychineb llifogydd Tywyn.

## Gorffennaf

- ◆ Peter Lilley yn rhybuddio am doriadau i fudd-dâl analluedd.
- ◆ CGGC yn cynnal cyfarfodydd ymgynghori yng ngogledd a de Cymru ar Ddiwygio'r Cronfeydd Strwythurol Ewropeaidd.
- ◆ Lansio rhaglen hyfforddiant flynyddol CGGC.
- ◆ Yn dilyn lobio gan CGGC, y Mesur laith yn cynnwys yr hawl i grwpiau gyhoeddi statws elusenol yn y Gymraeg yn unig.
- ◆ CGGC yn ymateb i Bapur Gwyn ar ad-drefnu llywodraeth leol.



- ◆ CGGC yn cyhoeddi crynhoad o'r Ddeddf Cyfiawnder Troseddol.

Cyfarfod o gynrychiolwyr ymddiriedolaethau prydeinig a grwpiau gwirfoddol adag Codi Pontydd a drefnwyd gan CGGC yng Nghaerdydd.

## Awst

- ◆ Pafliwn Gweithredu Gwirfoddol cyntaf erioed yn yr Eisteddfod Genedlaethol, wedi'i drefnu gan CGGC a Chyngor Cymru i'r Anabl, ac yn cynnwys pedair ar ddeg o elusennau.
- ◆ Cyhoeddi Gwobrau Menter Wybodaeth Gofal yn y Gymuned.
- ◆ Y Swyddfa Gartref yn ymgynghori ar reolau codi arian.

## Medi

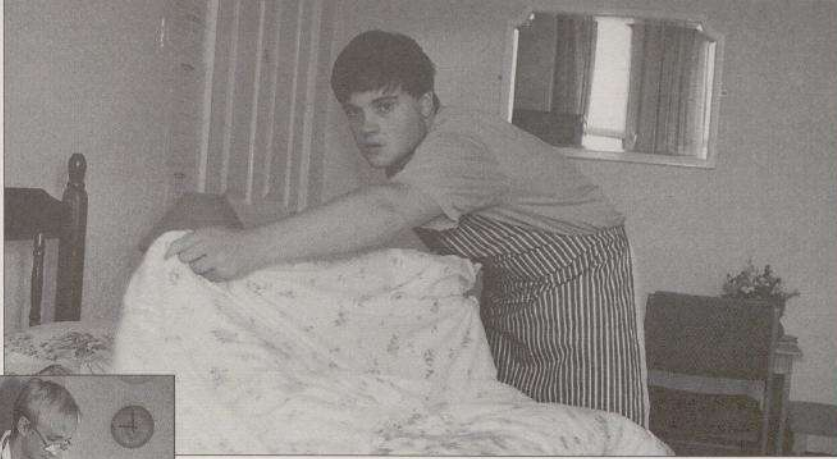
- ◆ Cynhadledd flynyddol CGGC yng Ngharno - Y dyfodol ar ein telerau ni.
- ◆ Lansio Anelu at Amcanion Cyffredin yn ne Cymru.



Ysgrifennydd Gwladol Cymru John Redwood (Chwith) yn cyflwyno Gwobrau Gwybodaeth Gofal yn y Gymuned (Awst 1993) i Graham Williams a swyddogion adran gwasanaethau cymdeithasol Morgannwg Ganol (blaen) Anne Jones o banel asesu Morgannwg Ganol ar gyfer defnyddwyr a chynhalwyr.

## Hydref

- ◆ Cyhoeddi adroddiad Gweithredu Gwirfoddol Centris.
- ◆ CGGC yn ethol Marjorie Dykins fel cadeirydd i olynu Syr Donald Walters. Jane Hutt yn cael ei gwneud yn is-gadeirydd.



Cynllun Hyfforddi Gwely a Brecwast Coleg Pengwern.



## Tachwedd

- ◆ CGGC yn prosesu 119 o geisiadau gwerth £6.8m i'r Gronfa Strwythurol Ewropeaidd.

- ◆ John Redwood yn cyhoeddi gohirio ad-drefnu llywodraeth leol hyd 1996.
- ◆ Y Mesur Loteri Cenedlaethol yn dod yn gyfraith gwlad.
- ◆ Cynhadledd 'argyfwng adnoddau' CAF yn cael ei chysylltu â digwyddiad gan CGGC yng Nghaerdydd.
- ◆ CGGC yn cynnal Cynhadledd Ewropeaidd yng Nghaerdydd gyda'r WDA a Chyngor Sir Morgannwg Ganol.
- ◆ CGGC a'r Fforwm Trefnwyr Gwirfoddoli yn cyhoeddi *Canllawiau i Drefnwyr Gwirfoddoli*.
- ◆ Cyhoeddi trydydd *Cyfeiriadur CGGC o Fudiadau Gwirfoddol*.

## Rhagfyr

- ◆ Lansio NVQS mewn cadwraeth yng Nghymru.
- ◆ CGGC yn cyhoeddi *Deddf Plant 1989 - Canllaw i Fudiadau Gwirfoddol*.
- ◆ Pasio'r Ddeddf Iaith.

## 1994 Ionawr

- ◆ CGGC yn lobbio'n gryf ar raglenni Ewropeaidd newydd.
- ◆ Lansio *Anelu at Amcanion Cyffredin* yng ngogledd Cymru.
- ◆ Lansio *Tyfiant Gwyrdd*, cyhoeddiad ar y cyd gan CGGC/Cyfeillion y Ddaear Cymru, i'r cyfryngau.

## Chwefror

- ◆ Lansio adroddiad CGGC ar ofal cymunedol i'r cyfryngau.
- ◆ Lansio pecyn gwytodaeth CGGC i ymddiriedolwyr gyda'r prif gomisynydd elusennau, Richard Fries.

## Mawrth

- ◆ CGGC yn trefnu *Codi Pontydd* yng Nghaerdydd gyda dau ddeg wyth o ymddiriedolaethau elusennol Prydeinig.
- ◆ Y Llywodraeth yn lansio Menter Wirfoddoli 'Make a Difference'.
- ◆ Mesur Hawliau Sifil (Personau Anabl) yn y Senedd.
- ◆ CGGC yn cyhoeddi *Coel hyd i'r cyllid* - arolwg o gyllid llywodraeth leol i grwpiau gwirfoddol a *Ydyn nhw'n gwrandao?* - arolwg o sut mae'r llywodraeth ganolog wedi rhoi'r argymhellion ynghylch Mesur Effeithiolrwydd ar waith.

Os ewch chi am wely a brecwast ar y ffordd i Lanelwyr yw dro peidiwch â synnu'ch cael eich hunan yn rhan o Brosiect Hyfforddi Gwely a Brecwast sy'n cael ei redeg gan Goleg Addysg Bellach Pengwern. Mae grant o'r Gronfa Gymdeithasol Ewropeaidd a hwyluswyd gan CGGC yn sicrhau bod y prosiect hwn yn rhoi hyfforddiant galwedigaethol addas ac unigryw i bobl ag anawsterau dysgu difrifol. Nid oes unrhyw beth y tu allan nac y tu mewn i'r caban gwyliau i ddangos ei gysylltiad â Phengwern, ac y mae cydnabyddiaeth y Bwrdd Croeso a'r glod uchel yn llyfr yr ymwelwyr yn ddigon o dystiolaeth i'w lwyddiant. Bydd tua chwe myfyriwr yn byw yno bob blwyddyn er mwyn datblygu sgiliau mewn arlwy, darparu gweithgareddau hamdden a lletygarwch gan ennill cymwysterau cenedlaethol.

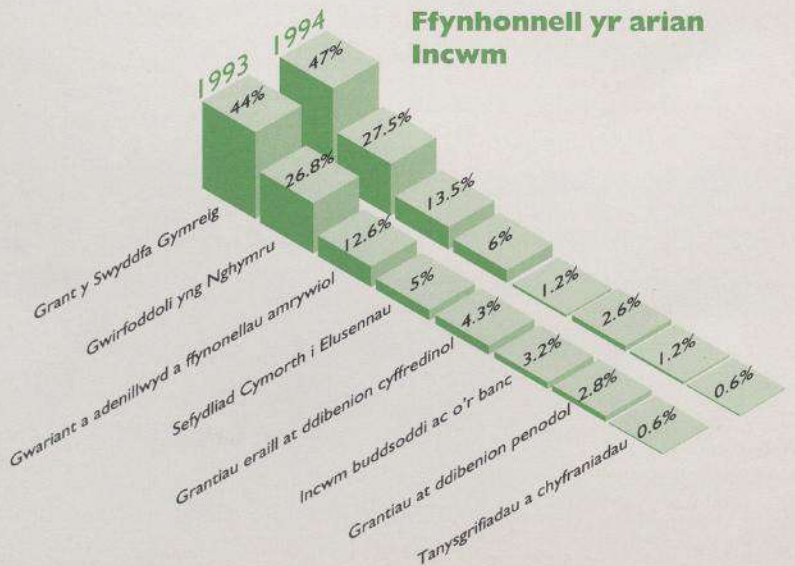


**Y fantolen ar 31 Mawrth 1994**

|                                      | 1994           | 1993           |
|--------------------------------------|----------------|----------------|
| <b>Asedau sefydlog</b>               |                |                |
| Asedau sylweddol                     |                |                |
| Eiddo rhydd-ddaliad                  | 340,000        | 340,000        |
| Cerbydau                             | 13,469         | 7,000          |
|                                      | <u>353,469</u> | <u>347,000</u> |
| <b>Asedau cyfredol</b>               |                |                |
| Buddsoddiadau                        | 120,652        | 100,832        |
| Dyledwyr a rhagdaliadau              | 22,058         | 11,708         |
| Arian parod yn y banc                | 152,006        | 158,109        |
| Arian parod mewn llaw                | 124            | 148            |
|                                      | <u>294,840</u> | <u>270,797</u> |
| <b>Credydwyr</b>                     |                |                |
| Symiau dyledus o fewn blwyddyn       | 165,937        | 155,350        |
| Asedau cyfredol net                  | 128,903        | 115,447        |
| Asedau llai rhwymedigaethau cyfredol | 482,372        | 462,447        |
| <b>Credydwyr</b>                     |                |                |
| Symiau dyledus ar ôl mwy na blwyddyn | 3,982          | —              |
| Darpariaeth ar gyfer rhwymedigaethau | 65,000         | 50,000         |
|                                      | <u>413,390</u> | <u>412,447</u> |
| <b>Cronfeydd</b>                     |                |                |
| Cyllid cronedig                      | 190,888        | 189,945        |
| Cronfeydd adbrisio                   | 222,502        | 222,502        |
|                                      | <u>413,390</u> | <u>412,447</u> |

**Cyfrif incwm a gwarint ar gyfer y flwyddyn yn diwedd 31 Mawrth 1994**

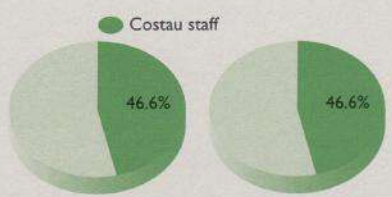
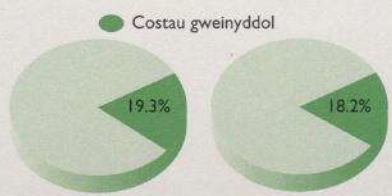
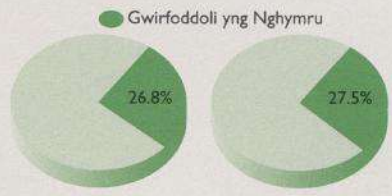
|  | 1994           | 1993           |
|--|----------------|----------------|
| <b>Incwm</b>                                 |                |                |
| Grantiau at ddibenion cyffredinol            |                |                |
| Y Swyddfa Gymreig                            | 378,532        | 354,970        |
| Sefydliad Cymorth i Elusennau                | 48,344         | 42,966         |
| Cronfa Gymdeithasol Ewrop - Cyflogaeth       | 9,345          | —              |
| Sefydliad Allen Lane                         | 1,000          | —              |
| Banc y National Westminster                  | —              | 11,500         |
| British Petroleum                            | —              | 7,500          |
| Sefydliad Gulbenkian (Lisbon)                | —              | 6,000          |
| Y Post Brenhinol                             | —              | 5,000          |
| British Telecom                              | —              | 3,437          |
| Marks a Spencer                              | —              | 1,100          |
| Cyngor Sir De Morgannwg                      | —              | 500            |
|  | <u>437,221</u> | <u>432,973</u> |
| Grantiau at ddibenion penodol                |                |                |
| Y Swyddfa Gymreig -- Grant tuag at y Gymraeg | 4,750          | 9,300          |
| Wythnos Wirfoddolwyr                         | 4,786          | —              |
| Deddf Blant                                  | —              | 12,196         |
| Yr Wyl Erddi                                 | —              | 1,000          |
|  | <u>9,536</u>   | <u>22,496</u>  |
| <b>Incwm arall</b>                           |                |                |
| Gwariant a adenillwyd ac incwm amrywiol      | 108,252        | 100,976        |
| Incwm buddsoddi ac o'r banc (gros)           | 21,331         | 25,264         |
| Tansgriffiadau a chyfraniadau                | 5,432          | 5,266          |
|  | <u>135,015</u> | <u>131,506</u> |
| Gwirfoddoli yng Nghymru                      | 221,000        | 215,000        |
| Incwm gweithredol                            | 802,772        | 801,975        |



**Cyfrif incwm a gwariant ar gyfer y flwyddyn yn diwedd 31 Mawrth 1994**

**Lle mae'r arian yn mynd Gwariant**

|   | 1994           | 1993           |
|---|----------------|----------------|
| <b>Incwm gweithredol a ddygwyd ymlaen</b>     | 802,772        | 801,975        |
| <b>Gwariant</b>                               |                |                |
| Costau gweinyddol                             |                |                |
| Cyflogau a chostau staff                      | 343,839        | 340,016        |
| Hyfforddiant staff                            | 4,957          | 9,602          |
| Teithio a threuliau                           | 24,765         | 24,438         |
| Lesio a chynnal a chadw offer                 | 14,375         | 10,979         |
| Yswiriannau                                   | 998            | 966            |
| Argraffu, papur a deunyddiau                  | 19,333         | 18,703         |
| Postio a ffôn                                 | 29,779         | 24,576         |
| Cyhoeddiadau a hysbysebu                      | 19,372         | 19,714         |
| Cynadleddau, cyfarfodydd a chyrsiau hyfforddi | 34,900         | 43,151         |
| Treuliau amrywiol                             | 1,384          | 2,551          |
| Tâl i archwilyr cyfrifon                      | 3,500          | 3,000          |
| Costau cyfrifadurol                           | 4,848          | 9,766          |
| Costau ymgynghorwyr                           | 15,594         | 8,609          |
| Car - dibrisiant a cholled                    | 6,500          | 3,000          |
| Costau cyfieithu                              | 4,318          | 9,998          |
| Costau banc                                   | 729            | -              |
|   | <u>529,191</u> | <u>529,069</u> |
| <b>Costau llety</b>                           |                |                |
| Rhenti a threthi                              | 13,611         | 11,572         |
| Yswiriant                                     | 997            | 966            |
| Golau a gwres                                 | 10,134         | 5,881          |
| Glanhau a chynnal a cadw                      | 3,008          | 4,938          |
| Darpariaeth at gynnal yr adeilad              | 15,000         | 15,000         |
|   | <u>42,750</u>  | <u>38,357</u>  |
| <b>Gwariant ar asedau sefydlog</b>            |                |                |
| Celfi a chyfarpar swyddfa                     | 8,888          | 16,458         |
| Gwirfoddoli yng Nghymru                       | 221,000        | 215,000        |
|   | <u>801,829</u> | <u>798,884</u> |
| <b>Gwarged gweithredol</b>                    | 943            | 3,091          |
| <b>Gwarged ar werthu asedau</b>               | -              | 9,075          |
|   | <u>943</u>     | <u>12,166</u>  |



**Polisiau cadw cyfrifon**

- ◆ Darparwyd y cyfrifon o dan y confensiwn costau hanesyddol wedi newidiadau yn sgil ad-brisio eiddo rhydd-ddaliad.
- ◆ Cynhwysir llog y banc fel incwm cronedig. Cynhwysir y cyfraniadau a dderbyniwyd. Cynhwysir grantiau yn y flwyddyn briodol.
- ◆ Ni wnaed cyfrif am stocio o gyhoeddiadau neu bapur.
- ◆ Codir ar raddfa o 30% o gost y car am ddibrisiant.

Mae set gyflawn o'r adroddiadau a chyfrifon ar gael oddi wrth Mr D Morris, ysgrifennydd y cwmni, CCGG, Llys Ifor, Heol Crescent, Caerffili, CF8 1XL, ffon 0222 869224.

Ni chafodd copi ei feillio gyda'r Comisiynywyr Elusennau.

At aelodau Cyngor Gweithredu Gwirfoddol Cymru.

Ym marn archwilyr y cyfrifon, Zeidman a Davis, mae'r crynodeb o'r cyfrifon yn y ddogfen hon yn gyson â'r cyfrifon llawn am yr un flwyddyn. Roedd adroddiad yr archwilyr ar y cyfrifon llawn yn ddiadmod.

*Zeidman a Davis*

Zeidman & Davis  
Cyfrifwyr Ardystiedig  
Archwilyr Cyfrifon  
Cofrestredig  
Ty Lawrence,  
Caerffili,  
Morgannwg Ganol.



## Pwyllgor Gwaith

Llywydd  
Iarll Lisburne

Trysorydd Anrhydeddus  
Mr W P Kitson

Cyfreithiwr Anrhydeddus  
Messrs Phillips & Buck

Cadeirydd (hyd fis Hydref  
1993)

Sir Donald Walters

Cadeirydd  
Mrs Marjorie Dykins

Is-gadeirydd (hyd fis Hydref  
1993)

Yr Athro George Thomason, CBE

Is-gadeirydd  
Jane Hutt

Dr N Ahmad

Mrs Pat Bowen

Yr Athro Maurice Broady

Lt Col David Cox LVO MBE

Mrs Ceinwen Davies

Mr John Ashton Edwards OBE

Mr Hywel V Evans

Ms S Meryl Evans

Mr Simon Hebditch

Mr Phil Jarrold

Y Parch Frank Jenkins

Mr John R Jones

Ms Jane Lewes

Mr John Payne

Mr D Marc Phillips

Mr Drew Reith

Ms Jenny Render

Mr Robert Taylor

Mrs Margaret Thorne OBE DL

Mr P K Verma, YH

## Aseswyr ar ran y Pwyllgor Gwaith

Mr Alan Thornton,  
Y Swyddfa Gymreig

Mr David G Evans, Y Swyddfa Gymreig

## Archwilwyr Cyfrifon

Zeidman & Davis

## Bancwyr

National Westminster Bank ccc.



Iarll Lisburne  
Llywydd CCGG



Jane Hutt  
Is-gadeirydd CCGG



Douglas Morris  
Ysgrifennydd y  
Cwmni/Swyddog  
Cyllid



John Ashton Edwards  
Aelod o'r Pwyllgor  
Gwaith



Stan Salter  
Gweinyddydd y  
Gronfa



Jan Bish  
Cynorthwydd Personol  
i'r Cyfarwyddwr



Marc Phillips  
Aelod o'r Pwyllgor  
Gwaith

## Staff y Cyngor Mawrth 1993/94

Cyfarwyddwr Graham Benfield

Cynorthwydd Personol  
i'r Cyfarwyddwr Jan Bish

Ysgrifennydd y Cwmni/  
Swyddog Cyllid Douglas Morris

Is-swyddog Cyllid Vida Davies

Rheolwraig Gwybodaeth  
ac Ymchwil Lynda Garfield

Cynorthwydd  
Gwybodaeth Aled Llwyd Evans

Swyddog y Wasg a  
Chyhoeddiadau Penny Taylor

Swyddog Hyfforddi a  
Chynadleddau Ruth Marks

Gweinyddydd Hyfforddi a  
Chynadleddau Sue Hutchings

Swyddog Datblygu  
Lleol Jane Jones

Swyddog Datblygu  
Cenedlaethol Peter Bryant

Swyddog Cyngor  
Cyllido Margaret Bond

Gweinyddydd y Gronfa Stan Salter

Swyddog Cefn Gwlad  
ac Ewrop Dewi Llwyd Evans

Swyddog Cronfa  
Gymdeithasol Ewrop Helen McLaughlin

Gweinyddydd y  
Swyddfa Lyn Lawton

Swyddog Gogledd  
Cymru Michael Palmer

Swyddog Codi  
Arian Lindsey Williams

Goruchwylydd y  
Swyddfa Diane Roberts

Cynorthwydd Clerigol a Swyddog  
Iechyd a Diogelwch Wendy Bidgway

Cynorthwydd y Swyddfa Kathryn Thomas

Porthor Ron Pask

Glanhawraig y Swyddfa Ann Greenway

*Dymuna CCGG ddiolch i'r mudiadau canlynol am eu cefnogaeth*

- \* Y Swyddfa Gymreig
- \* Cyngor Dinas Caerdydd
- \* Cyngor Sir De Morgannwg
- \* Ymddiriedolaeth Elusennal Esnee Fairbairn
- \* Sefydliad Allen Lane
- \* Banc y National Westminster
- \* Ymddiriedolaeth Tudor
- \* Sefydliad Calouste Gulbenkian
- \* Ymddiriedolaeth Carnegie ym Mhrydain
- \* Sefydliad Lankelly